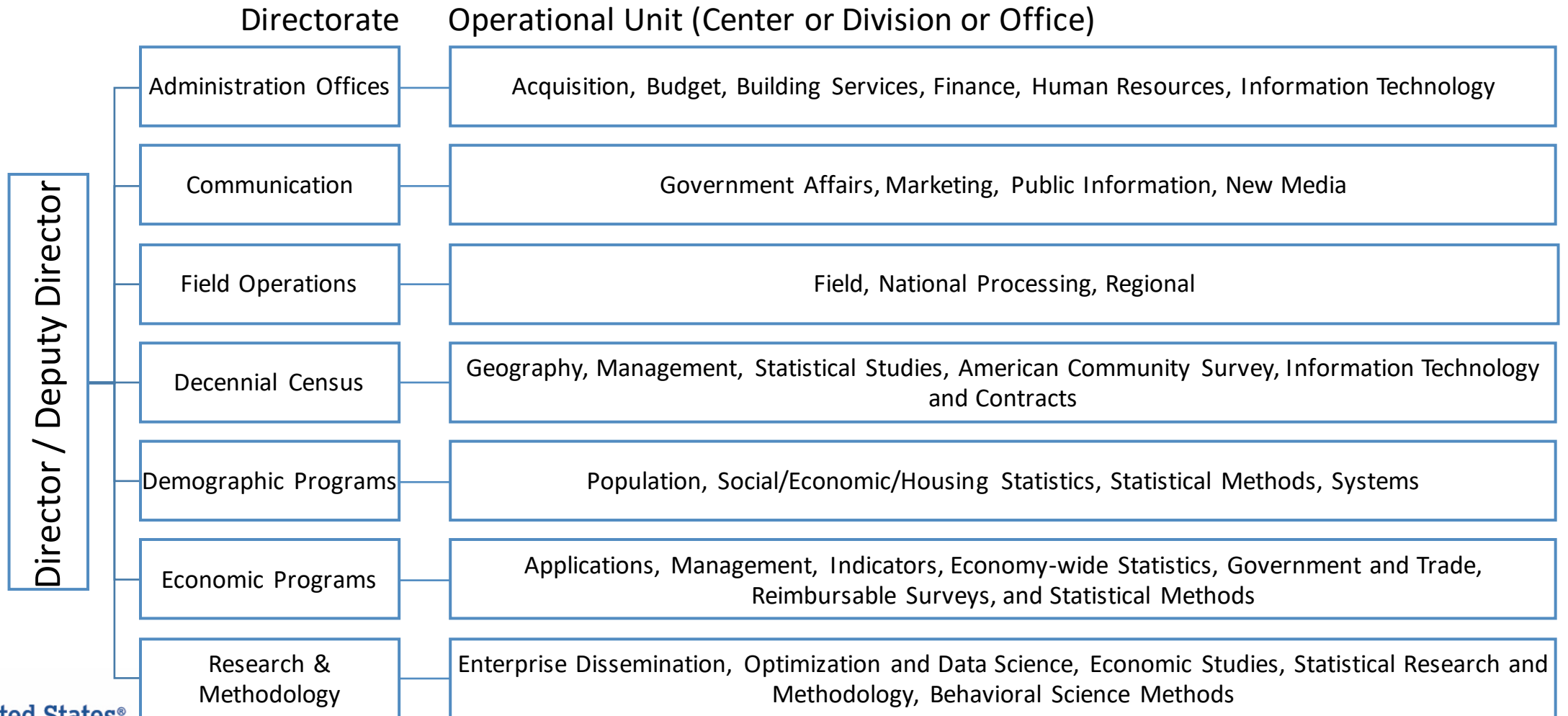


Career Opportunities  
at  
The U.S. Census Bureau

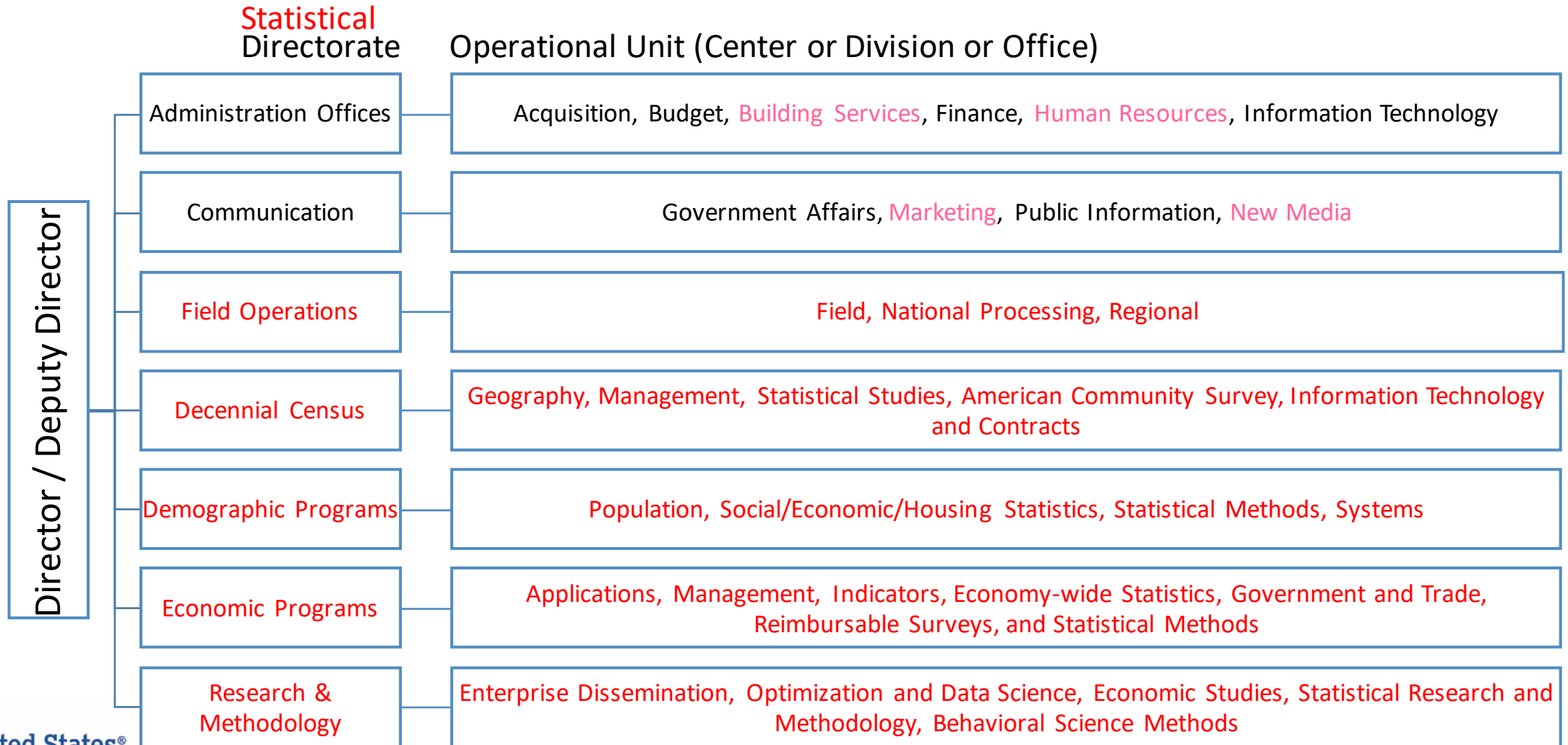
**Jonah Wong**  
Mathematical Statistician  
Methodology and Standards Council  
Staff Recruitment and Retention

NISS Virtual Government Career Fair  
December 2022

# Census Bureau Organizational Overview



# Census Bureau Organizational Overview



# Census Bureau

## Statistical Job Series

### Permanent Positions

**Survey Statistician/Analyst/Data Scientist** – 1530 series – involved with collection, collection management, data analysis and publishing of findings.

**Mathematical Statistician** – 1529 series – involved with methodology in all the production areas and research to solve methodological problems.

**Geographer (0150), Social Scientist (0101), Psychologist (0180), Economist (0110), Operations Research Analyst (1515), Program Manager (0340), Computer Scientist (1550)**

**NEW Data Scientist** – 1560 series – involved with data manipulation to inform methodology via programming and/or graphical representation.

### Student Opportunities

**Student Trainee** – 1599 series – typically summer internships, but may extend through Fall and Spring semesters, and may lead to permanent employment. Hiring at all levels from undergraduate to graduate.

Go to: <https://www.census.gov/about/census-careers.html>  
Or navigate to Jobs from the Census homepage.

# Census Bureau Employment Numbers

- Headquarters, Suitland MD
- 4,000 - 6,000 employees



- Regional Offices/National Processing Center
- 7,200/1,200 permanent employees
- 650,000/6,000 additional temporary staff during a Census



List of States Served by Each Regional Office

Regional Office	Areas Served
Atlanta	Alabama, Florida, Georgia, Louisiana, Mississippi, North Carolina, South Carolina
Chicago	Arkansas, Illinois, Indiana, Iowa, Michigan, Minnesota, Missouri, Wisconsin
Denver	Arizona, Colorado, Kansas, Montana, Nebraska, New Mexico, North Dakota, South Dakota, Oklahoma, Texas, Utah, Wyoming
Los Angeles	Alaska, California, Hawaii, Idaho, Nevada, Oregon, Washington
New York	Connecticut, Maine, Massachusetts, New Hampshire, New Jersey, New York, Rhode Island, Vermont, Puerto Rico
Philadelphia	Delaware, District of Columbia, Kentucky, Maryland, Ohio, Pennsylvania, Tennessee, Virginia, West Virginia
CLOSED	Boston, Charlotte, Dallas, Detroit, Kansas City and Seattle regional offices closed in late 2012 and transferred all responsibilities to the six remaining regions.

# Census Bureau Employment Numbers

- Headquarters, Suitland MD
- 4,000 - 6,000 employees



- Regional Offices/National Processing Center
- 7,200/1,200 permanent employees
- 650,000/6,000 additional temporary staff during a Census



List of States Served by Each Regional Office

Regional Office	Areas Served
Atlanta	Alabama, Florida, Georgia, Louisiana, Mississippi, North Carolina, South Carolina
Chicago	Arkansas, Illinois, Indiana, Iowa, Michigan, Minnesota, Missouri, Wisconsin
Denver	Arizona, Colorado, Kansas, Montana, Nebraska, New Mexico, North Dakota, South Dakota, Oklahoma, Texas, Utah, Wyoming
Los Angeles	Alaska, California, Hawaii, Idaho, Nevada, Oregon, Washington
New York	Connecticut, Maine, Massachusetts, New Hampshire, New Jersey, New York, Rhode Island, Vermont, Puerto Rico
Philadelphia	Delaware, District of Columbia, Kentucky, Maryland, Ohio, Pennsylvania, Tennessee, Virginia, West Virginia
CLOSED	Boston, Charlotte, Dallas, Detroit, Kansas City and Seattle regional offices closed in late 2012 and transferred all responsibilities to the six remaining regions.

Survey Statisticians  
1500 – 2000 employees

Economists  
30 – 100 employees

Mathematical Statisticians  
350 – 500 employees

Program Managers  
50 – 100 employees

Geographers  
150 – 300 employees

Social Scientists, Psychologists,  
Operations Research Analysts  
20 – 100 employees



Just hired 10 Data Scientists!

Questions?

**Jonah Wong**

Mathematical Statistician  
Methodology and Standards Council  
Methodology Staff Recruitment and Retention

**[jonah.l.wong@census.gov](mailto:jonah.l.wong@census.gov)**

**301-763-3366**