



**INSTITUTE FOR SOCIAL RESEARCH
SURVEY RESEARCH CENTER**

UNIVERSITY OF MICHIGAN

**A Total Survey Error Perspective
on Comparative Surveys**

October 2nd 2014 – ITSEW – Washington DC

Beth-Ellen Pennell, University of Michigan

Lars Lyberg, Stockholm University

Peter Mohler, University of Mannheim

Kristen Cibelli Hibben, University of Michigan (presenting author)

Gelaye Worku, Stockholm University



Presentation Outline

1. Background
2. Integrated Total Survey Error Model
 - Contribution to Errors:
 - Representation: Coverage, Sampling, Nonresponse errors
 - Measurement: Validity, Measurement errors
 - Measurement error – expanded view
3. Conclusion

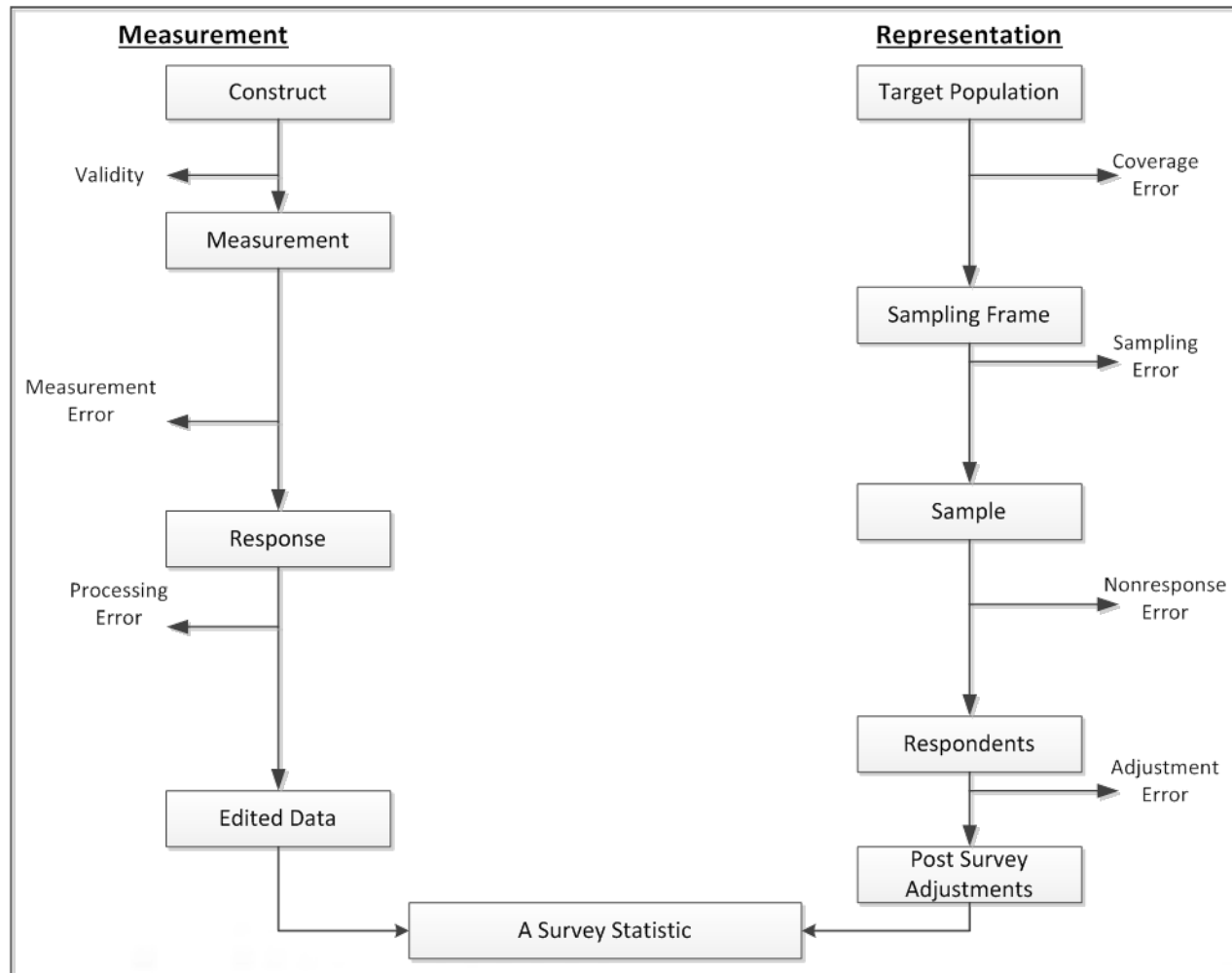
Background

1. The scope, scale, and number of multicultural, multiregional or multinational (3M) surveys continues to grow
 - a. Examples: European Social Survey (20+ countries), the World Values Survey (75+ countries), the Gallup World Poll (160 countries)
2. The purpose is comparability – An estimate for one country should be reasonably comparable to another.
3. However, comparability in 3M surveys is affected by various error sources that we are used to considering plus some additional ones.

Background, continued...

1. 3M surveys have an error typology that differs from monocultural surveys.
 - a. Error sources in 3M surveys are typically amplified
 - b. 3M surveys often require additional operations – i.e. adaptation, translation
2. Few attempts have been made to adapt the TSE framework to 3M surveys (except see: Smith's (2011) refined TSE model).
3. The proposed TSE typology integrates error sources – and associated methodological and operational challenges that may limit comparability.

Total Survey Error (Groves et al., 2004)



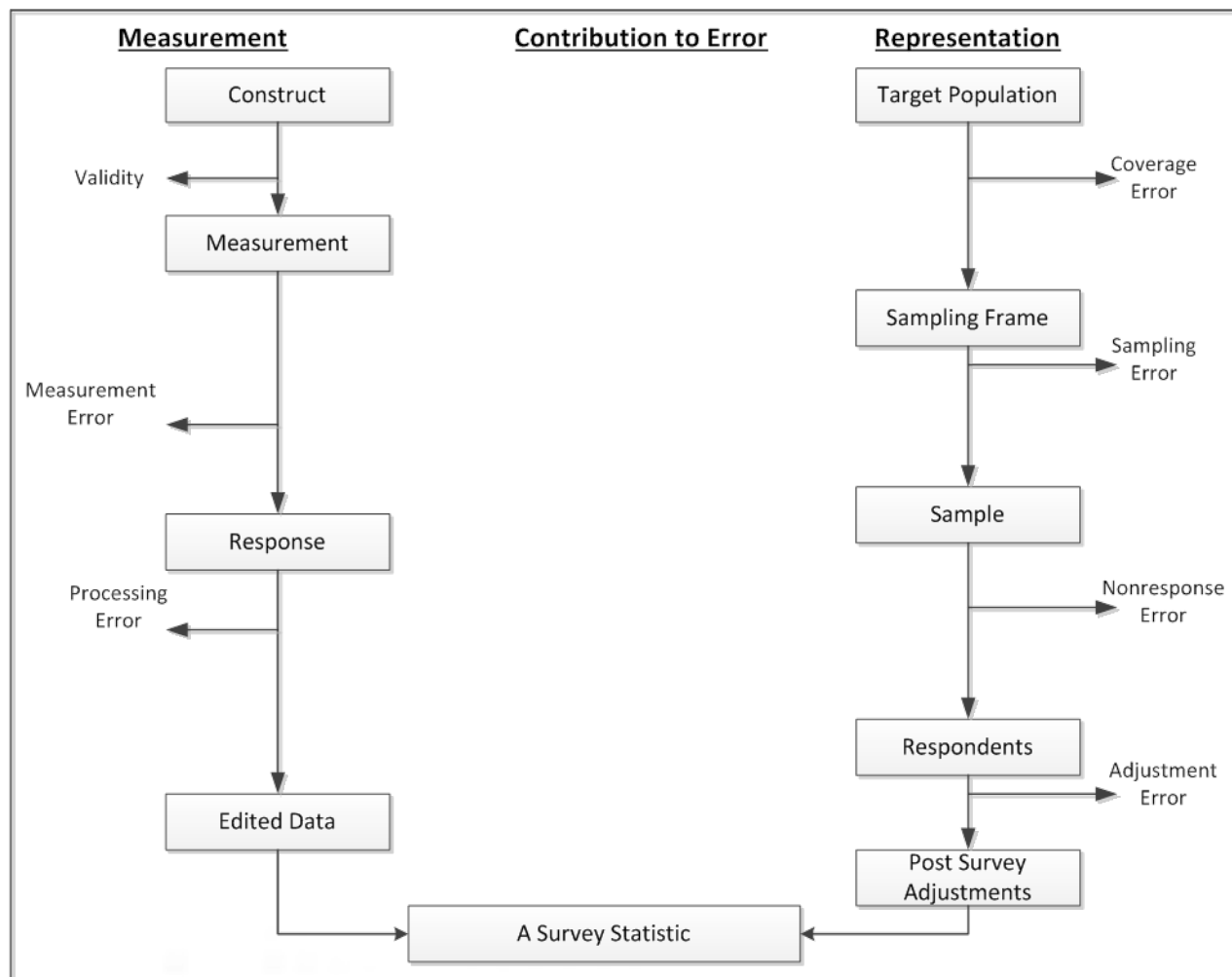


An Integrated TSE Model

Some general points:

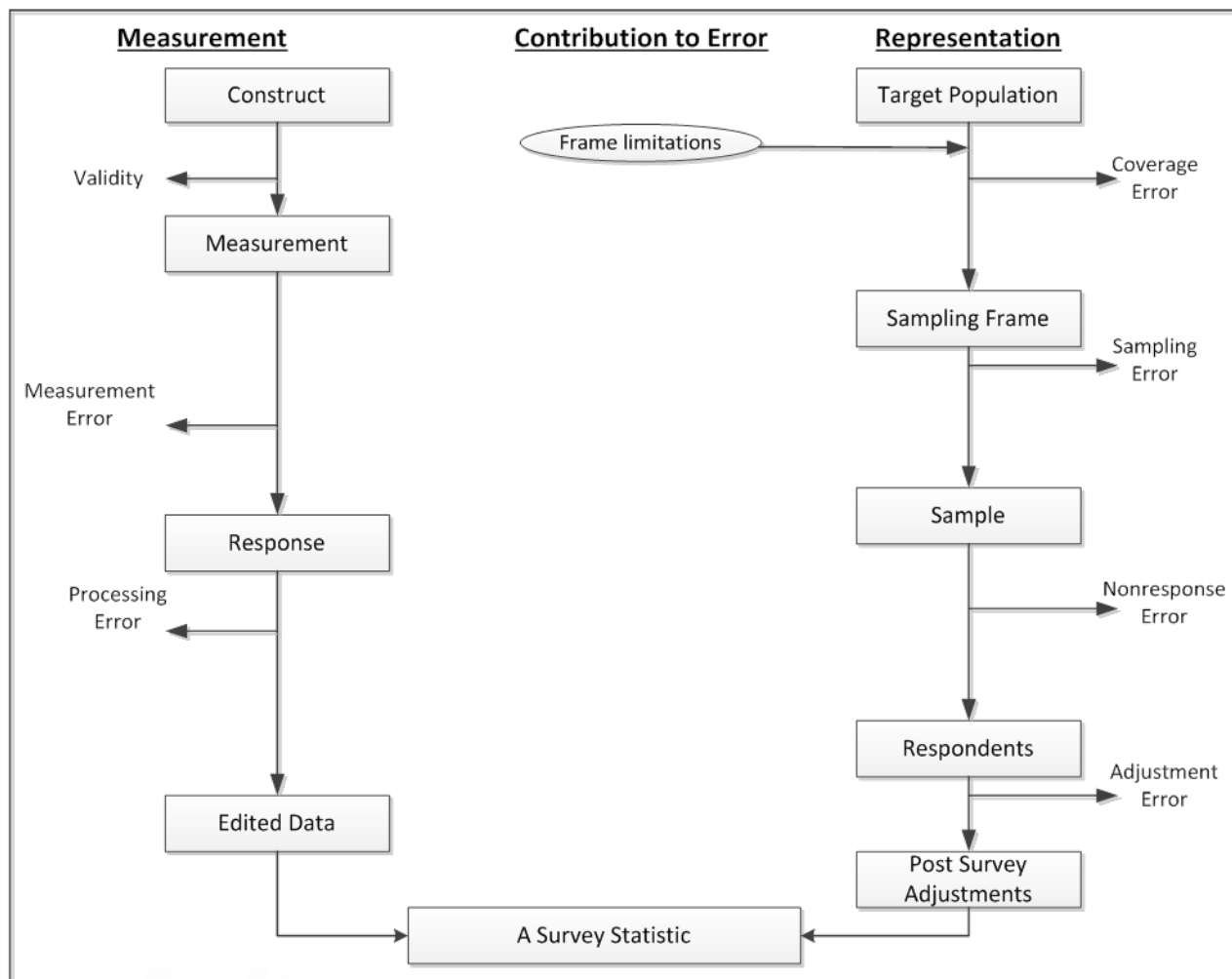
1. The framework is statistic specific
2. Error sources may interact
3. Bias/Variance
4. Not all error sources can be quantified

An Integrated Total Survey Error Framework



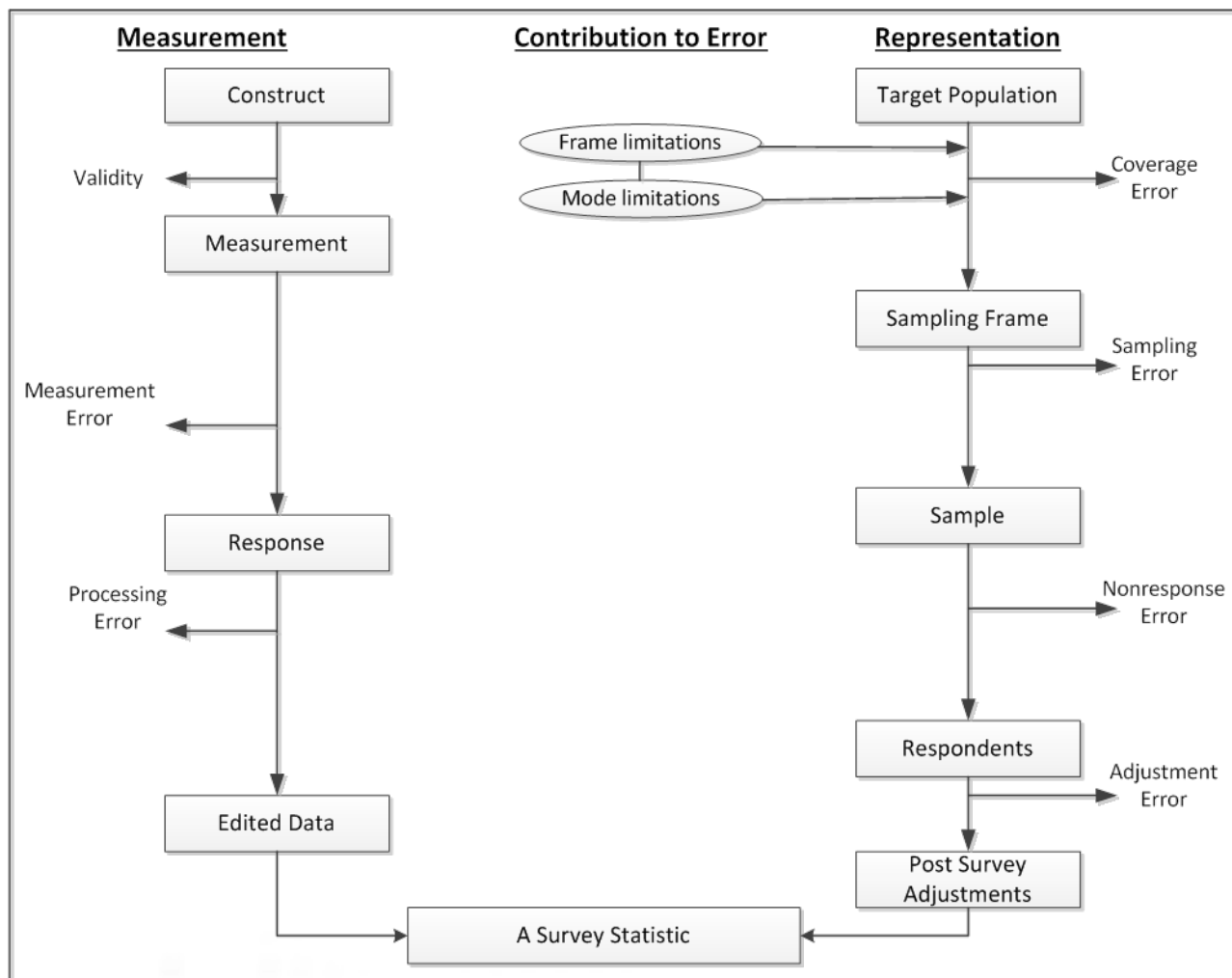
Modified from Groves et al. (2004)

An Integrated TSE Model: Coverage Error



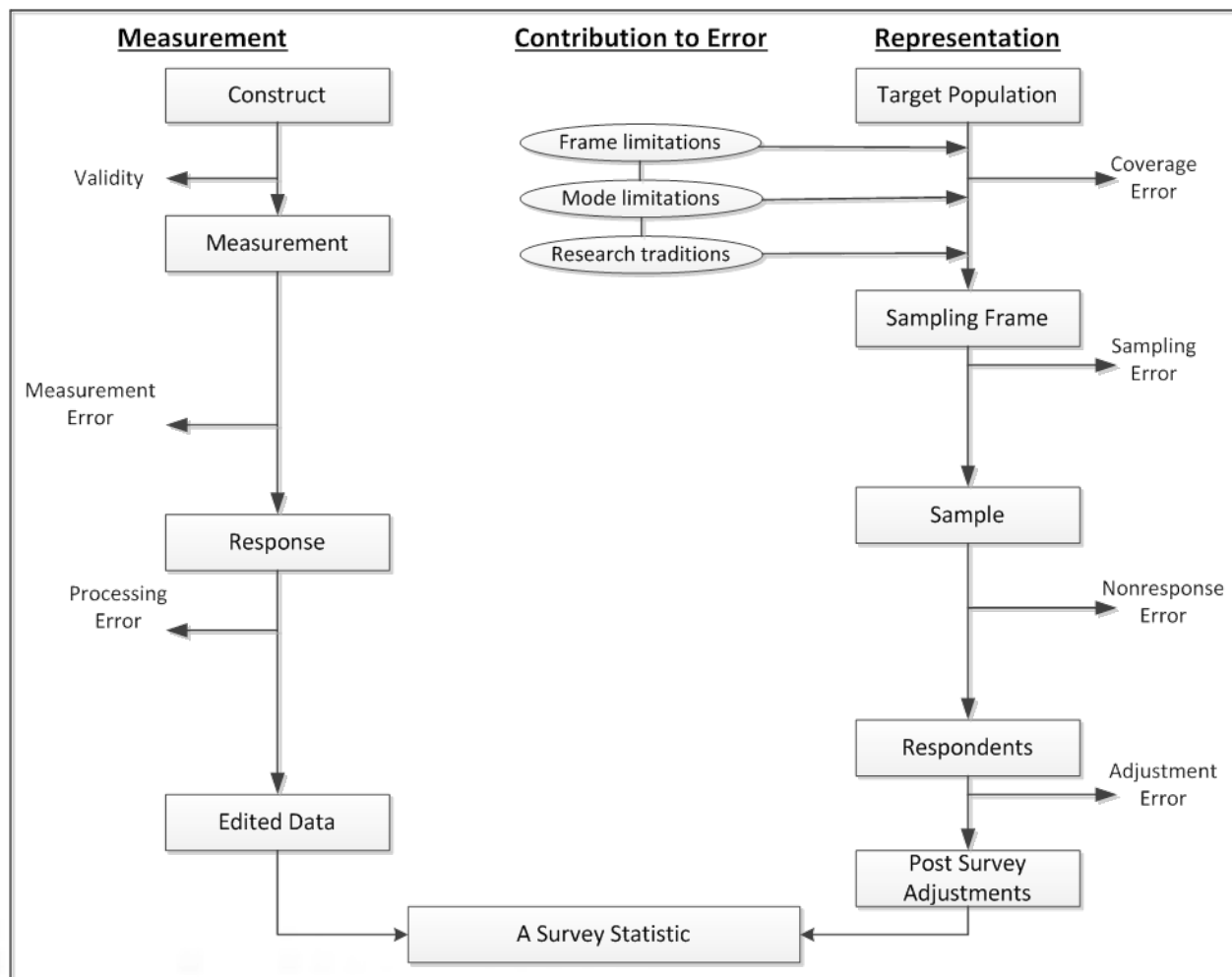
Modified from Groves et al. (2004)

An Integrated TSE Model: Coverage Error



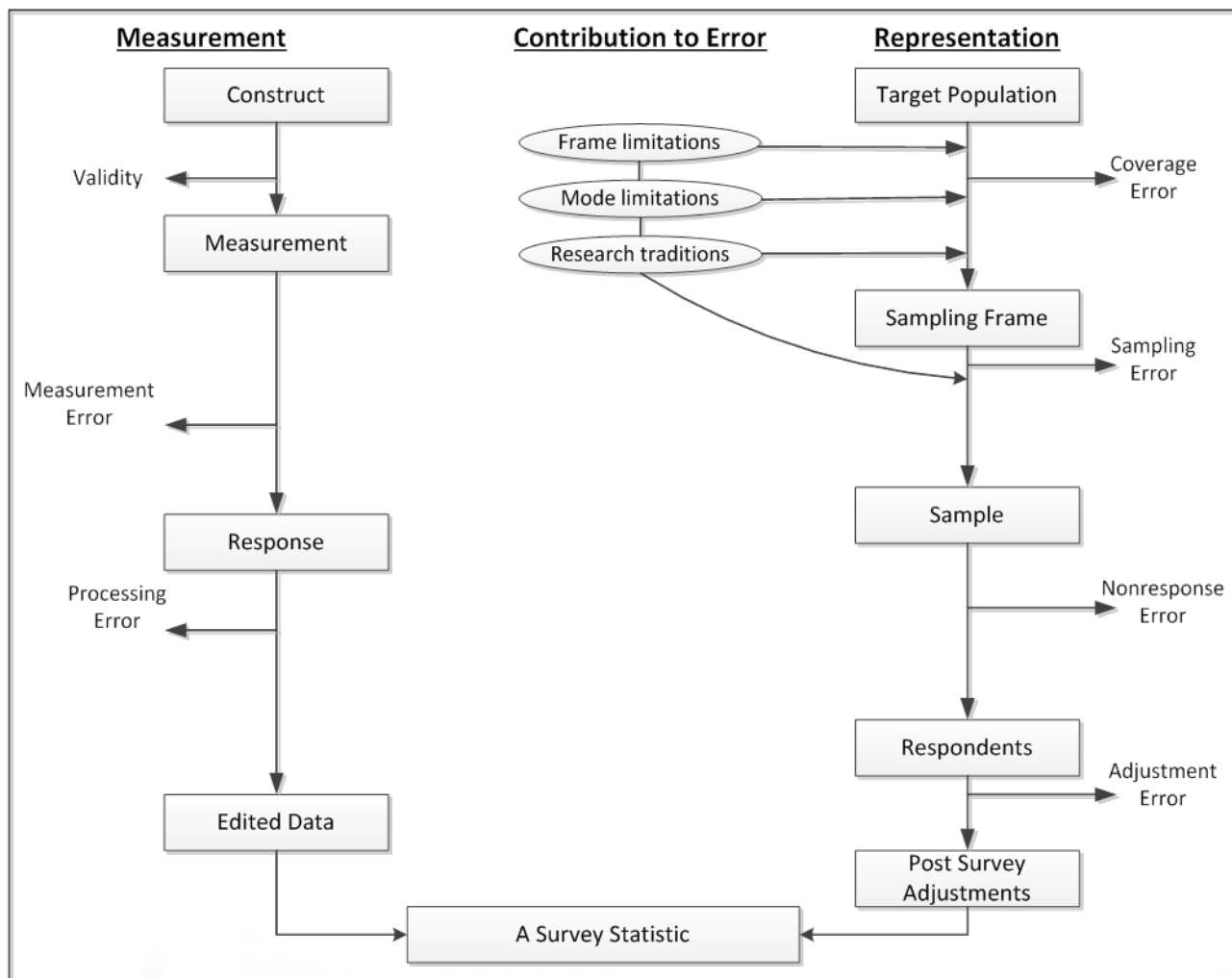
Modified from Groves et al. (2004)

An Integrated TSE Model: Coverage Error



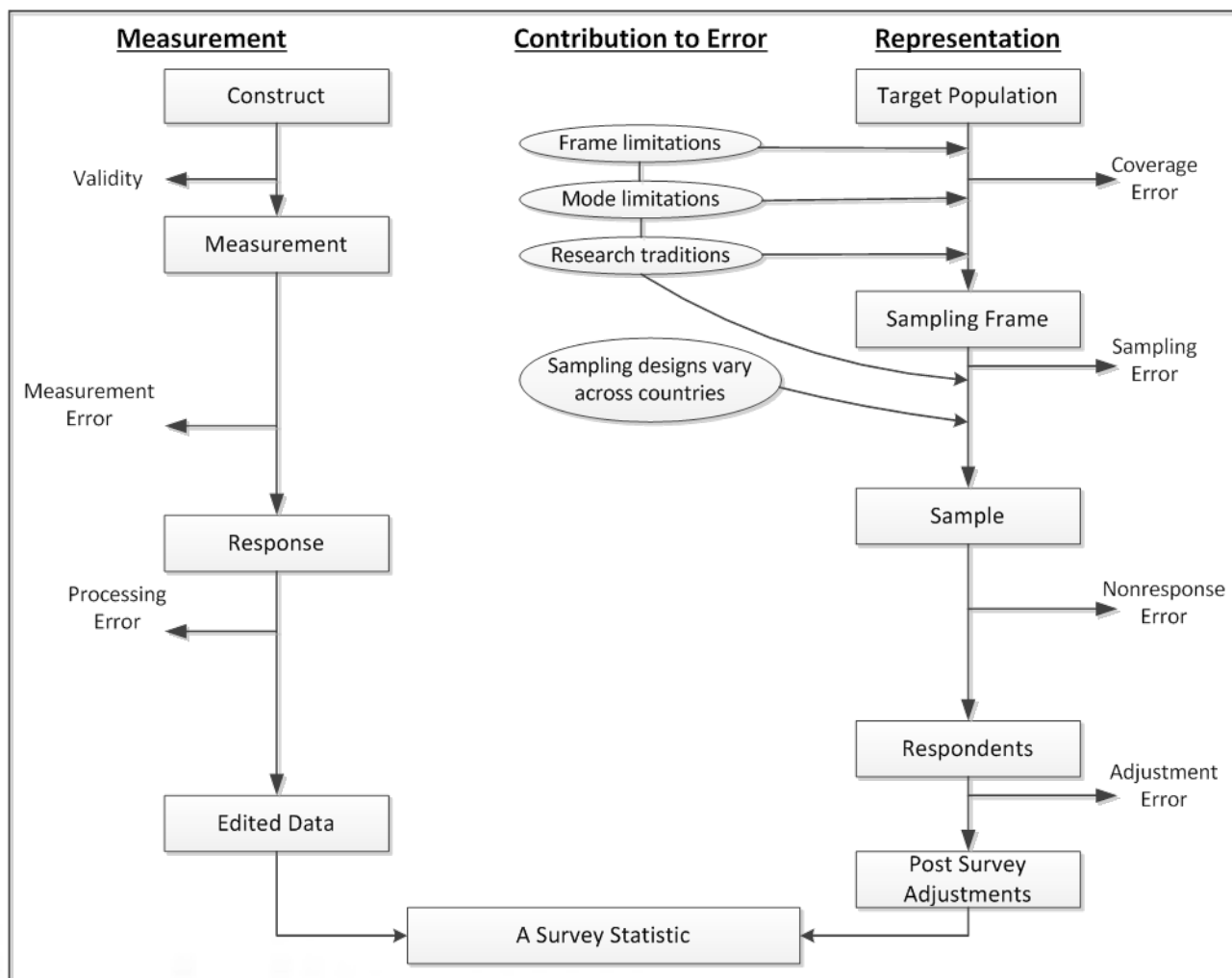
Modified from Groves et al. (2004)

An Integrated TSE Model: Sampling Error



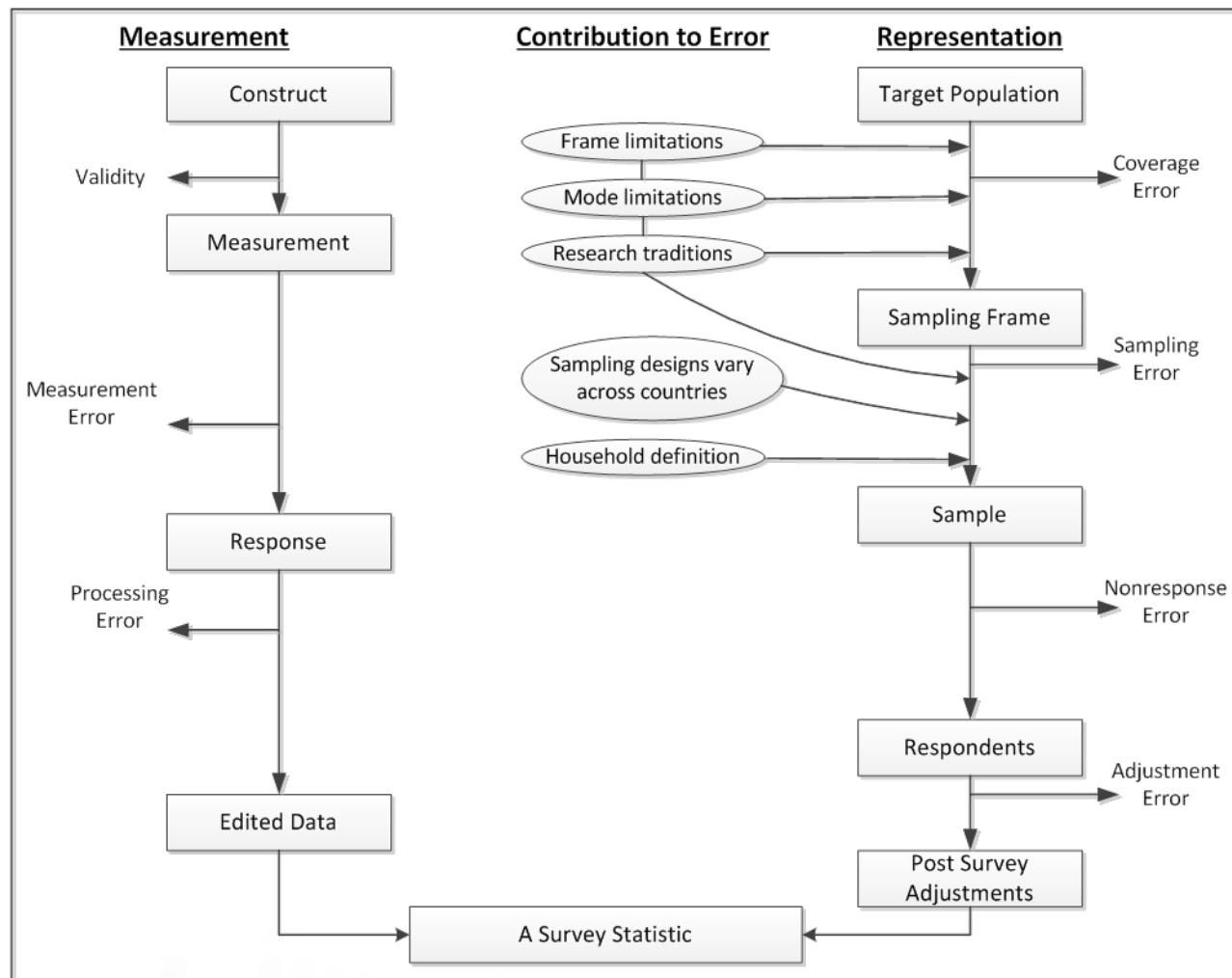
Modified from Groves et al. (2004)

An Integrated TSE Model: Sampling Error



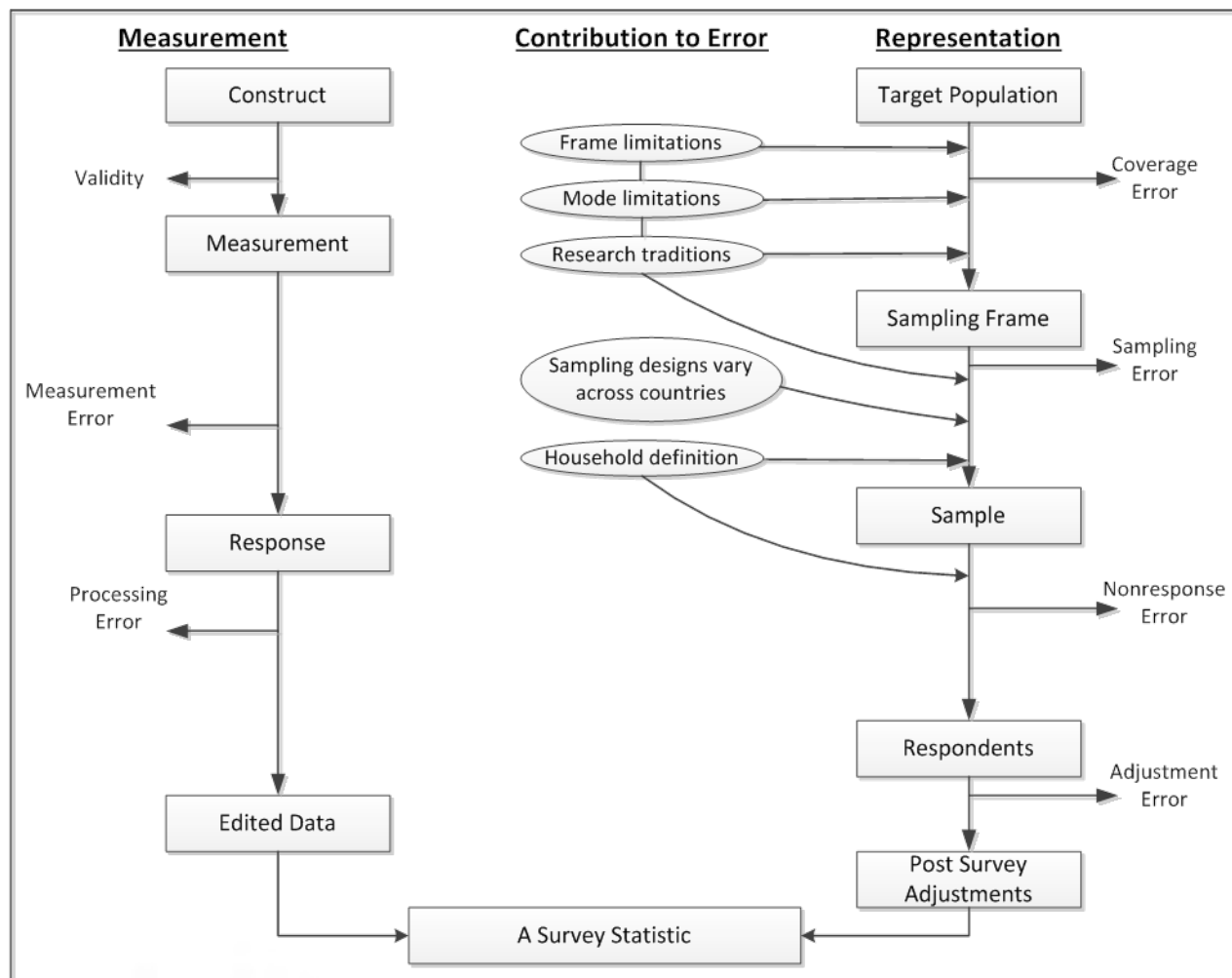
Modified from Groves et al. (2004)

An Integrated TSE Model: Sampling Error



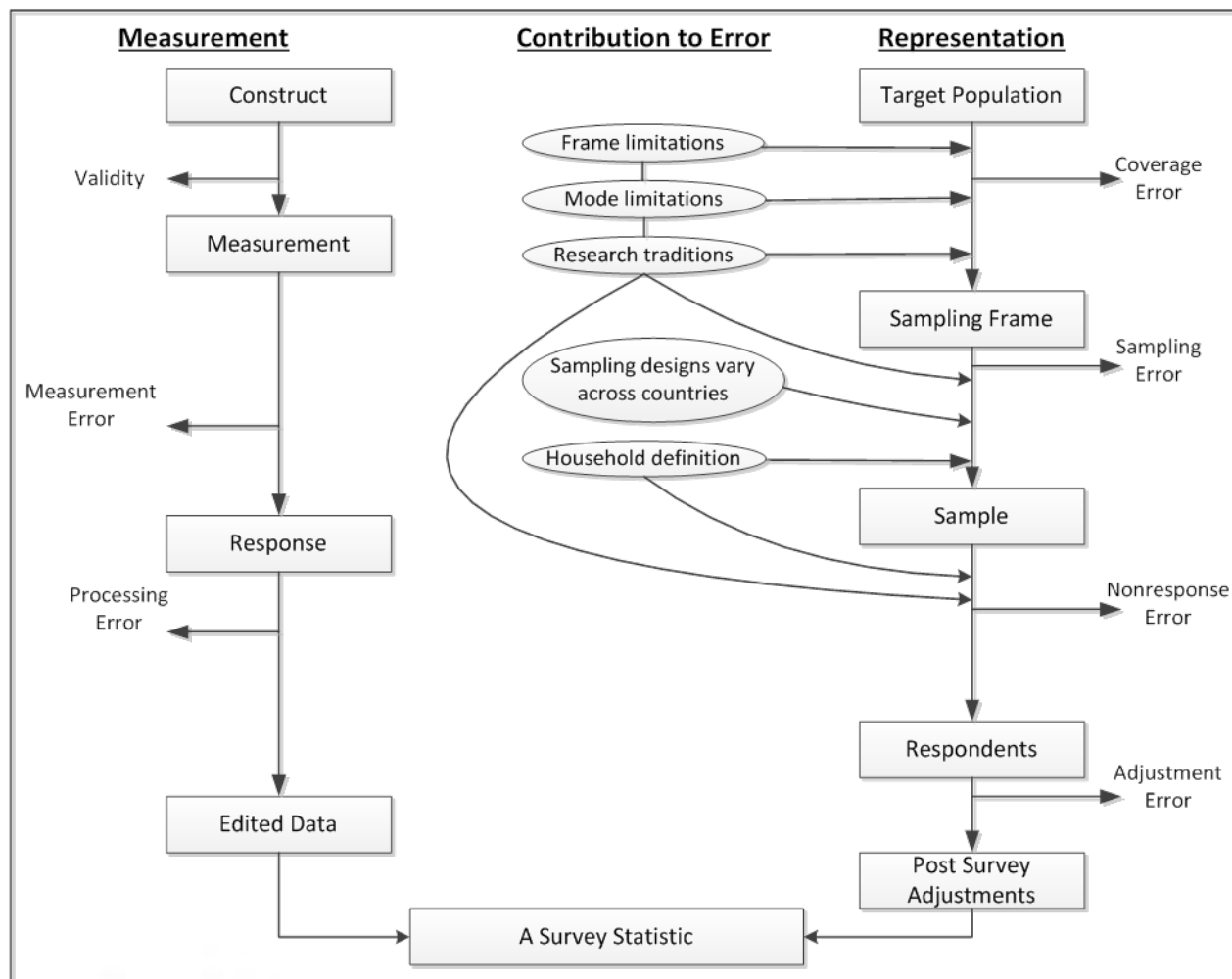
Modified from Groves et al. (2004)

An Integrated TSE Model: Nonresponse Error



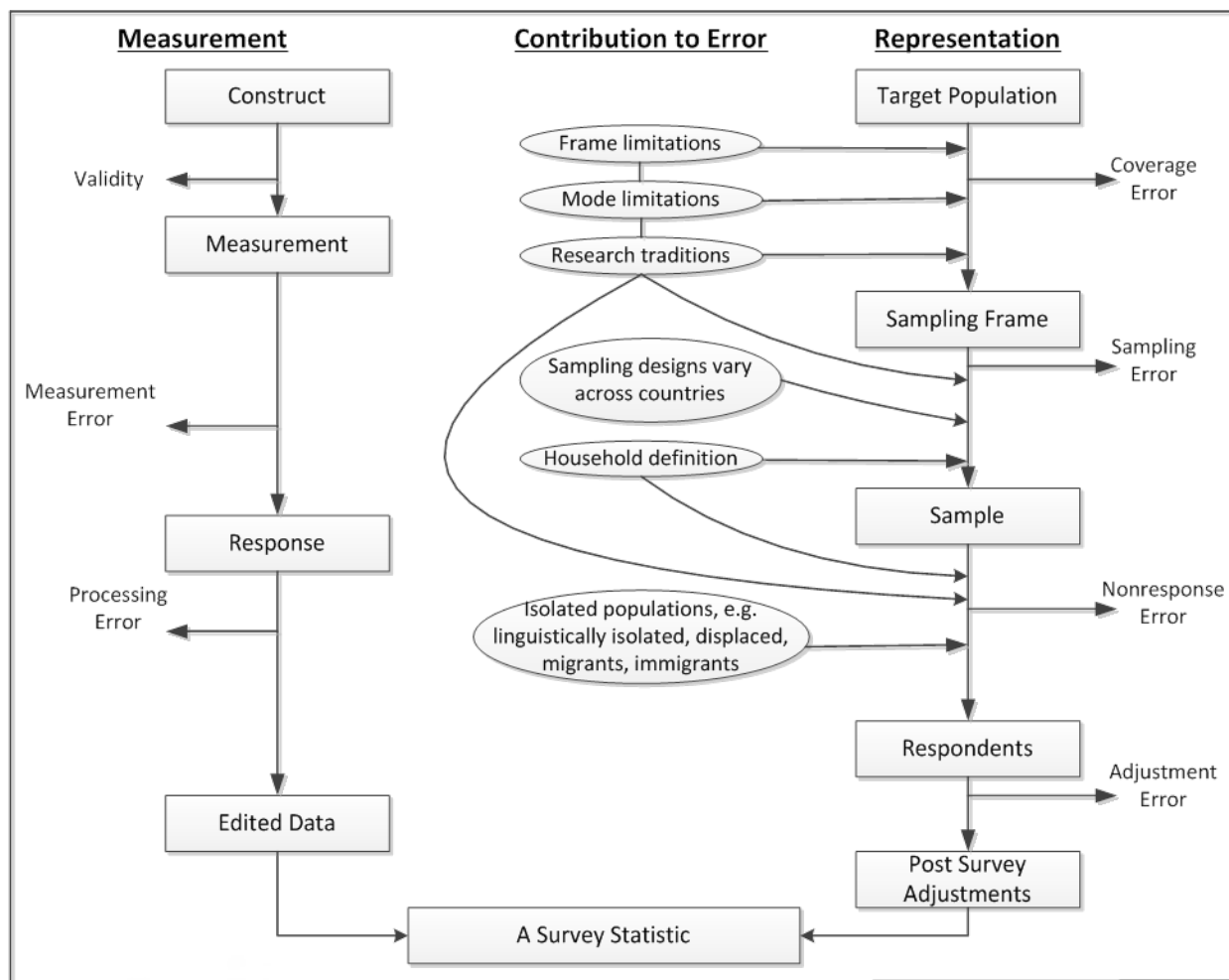
Modified from Groves et al. (2004)

An Integrated TSE Model: Nonresponse Error



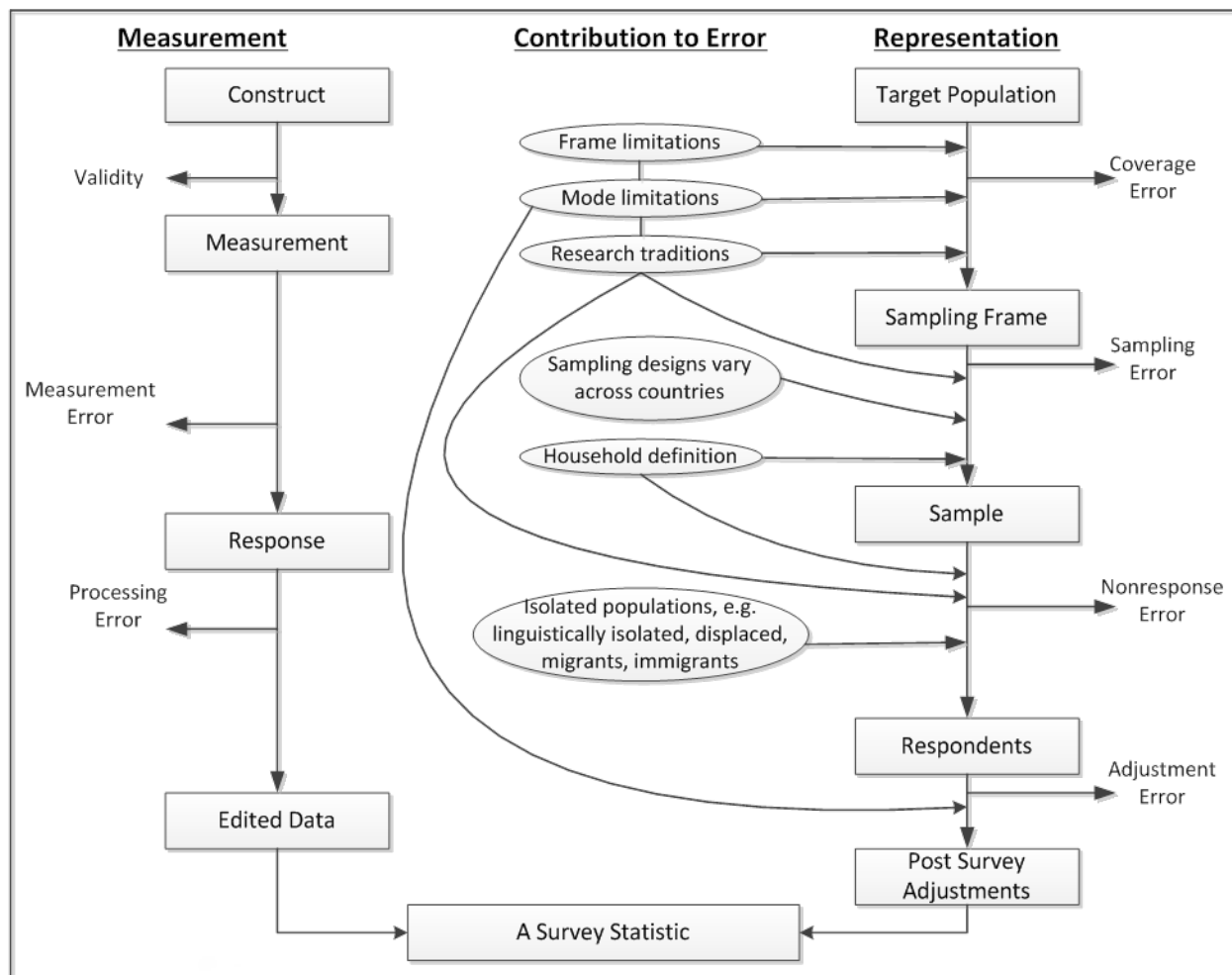
Modified from Groves et al. (2004)

An Integrated TSE Model: Nonresponse Error



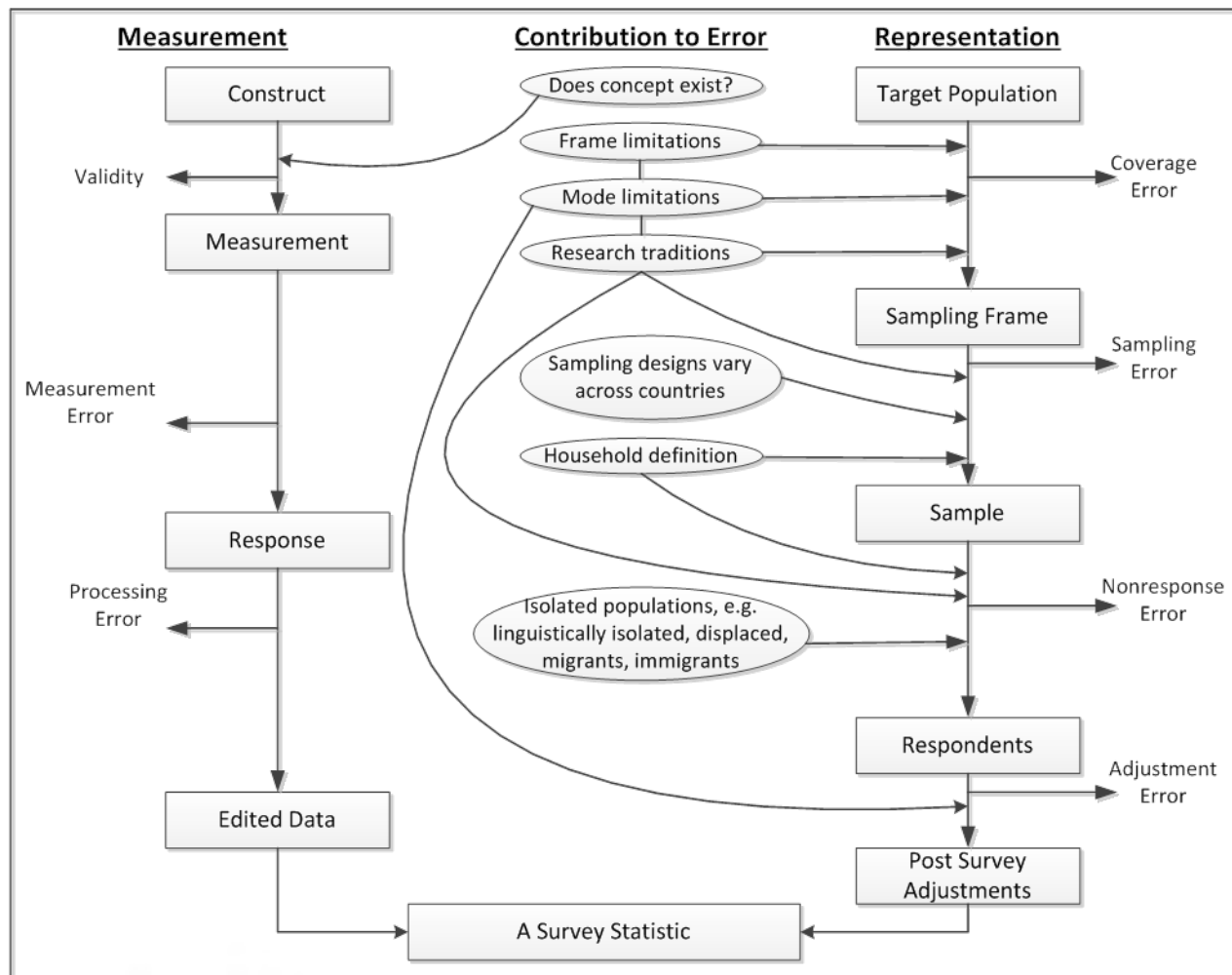
Modified from Groves et al. (2004)

An Integrated TSE Model: Adjustment Error



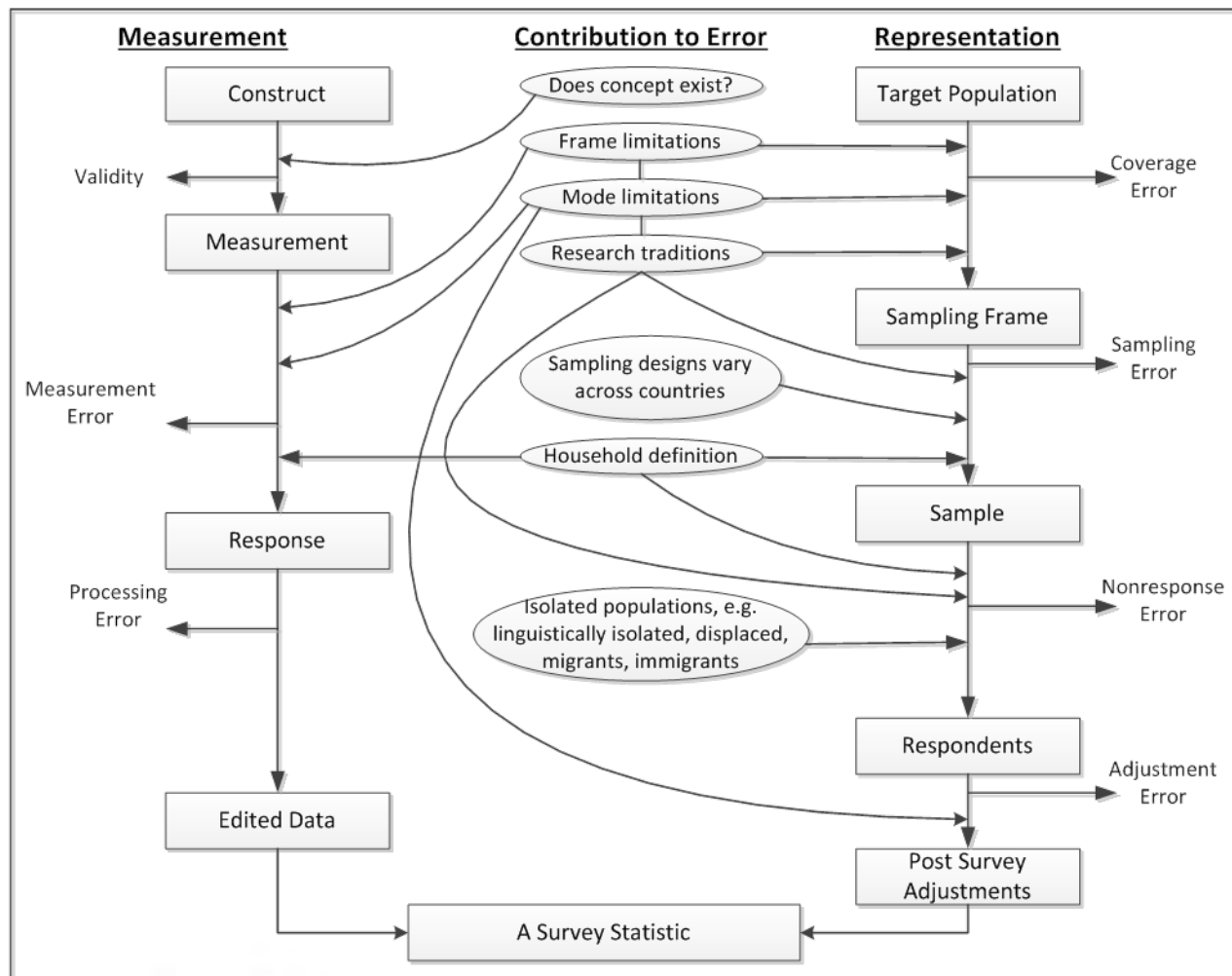
Modified from Groves et al. (2004)

An Integrated TSE Model: Validity Error



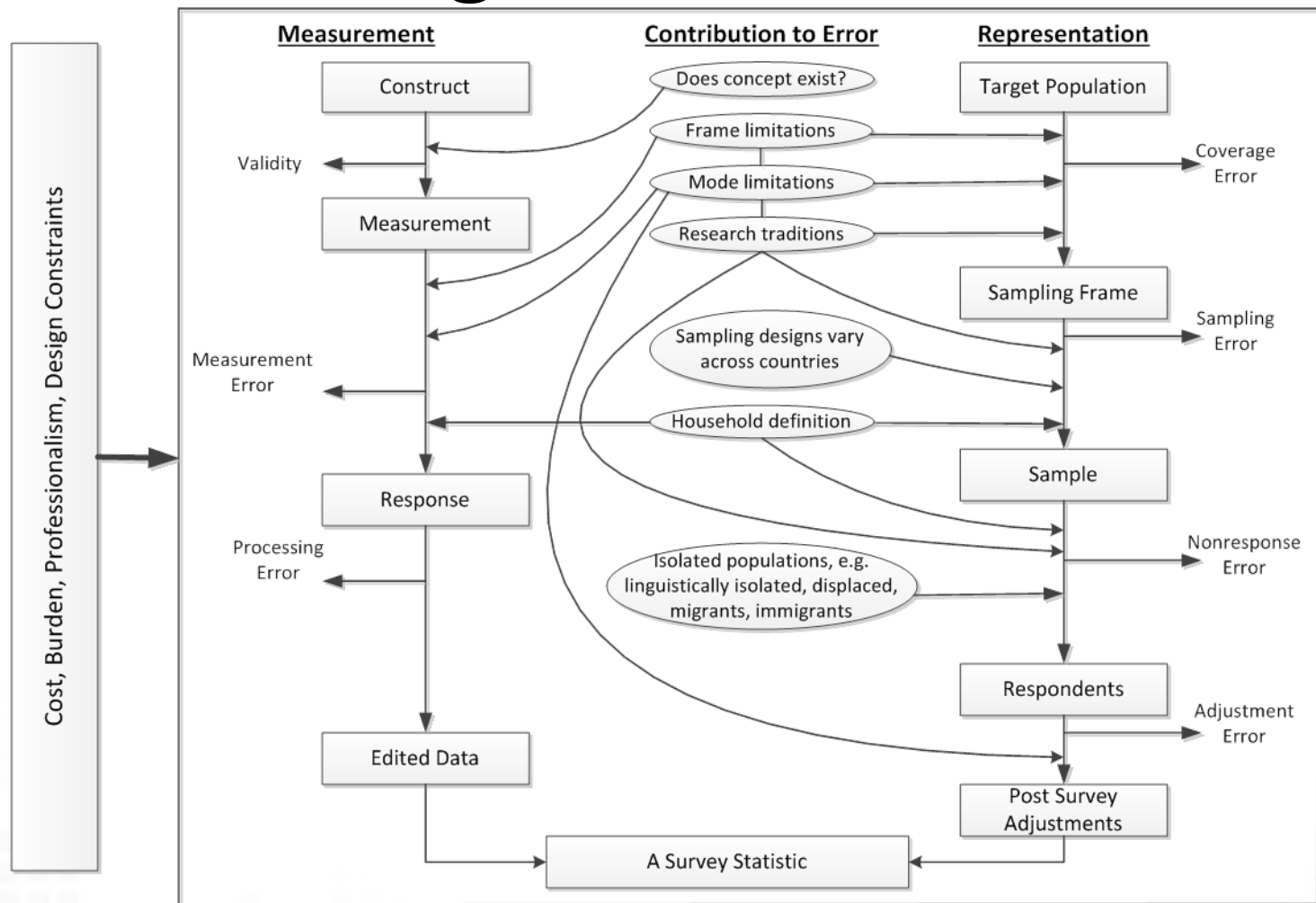
Modified from Groves et al. (2004)

An Integrated TSE Model: Measurement Error



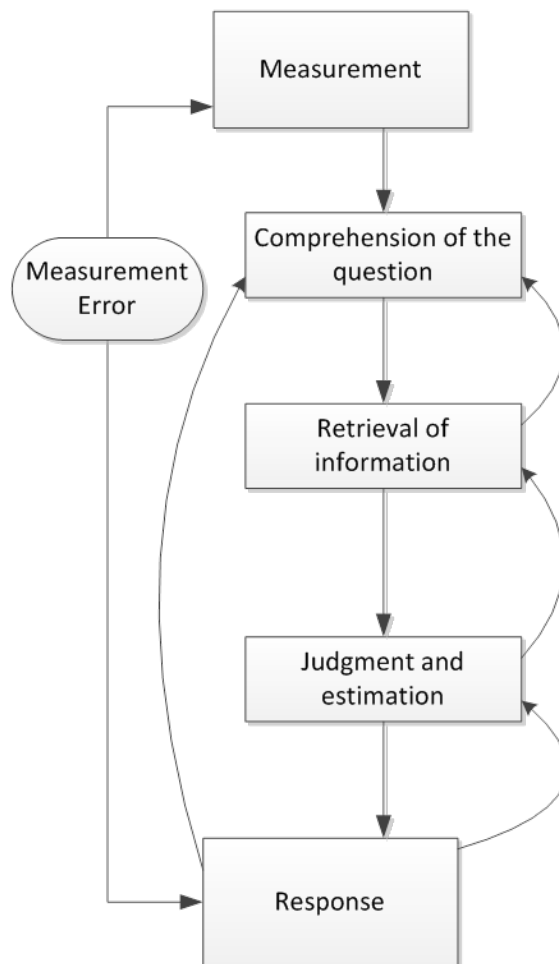
Modified from Groves et al. (2004)

An Integrated TSE Model



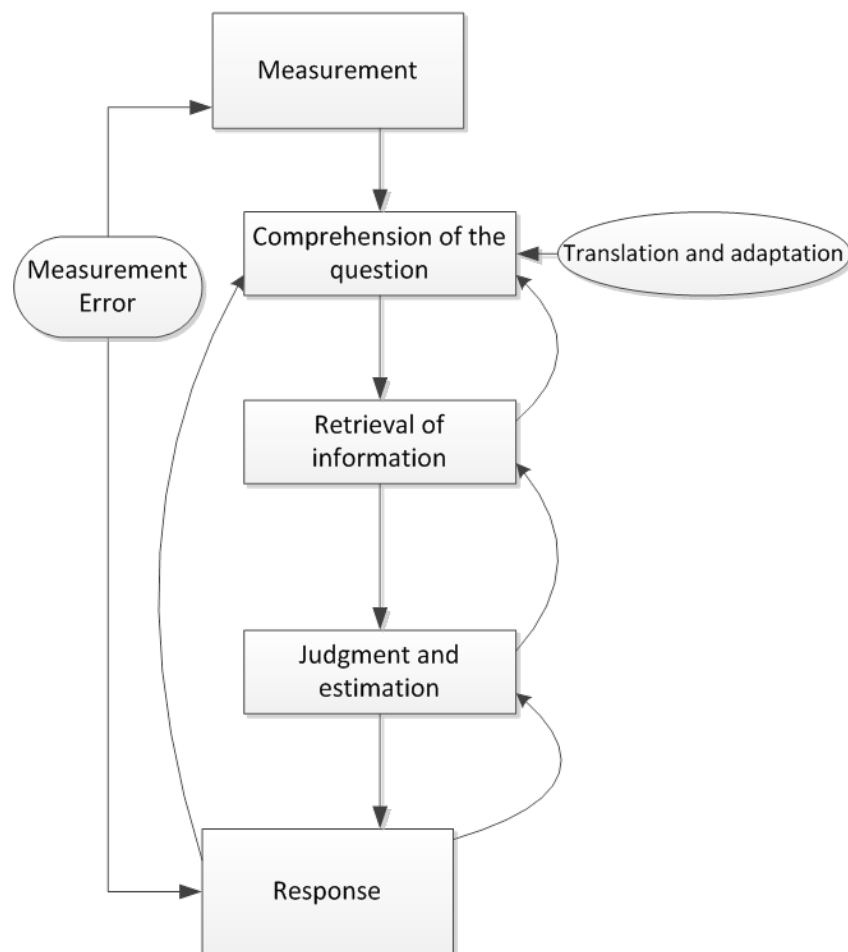
Modified from Groves et al. (2004)

Measurement Error: Expanded View



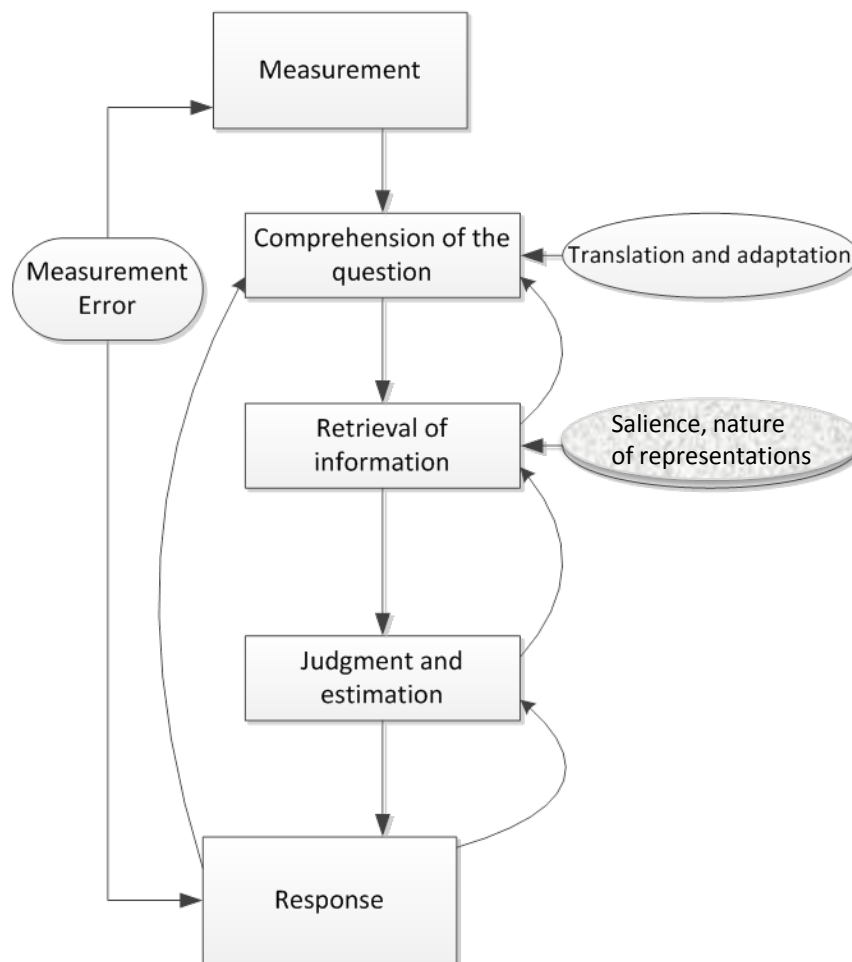
Modified from Groves et al. (2004) and Tourangeau et al. (2000)

Error Sources: Comprehension



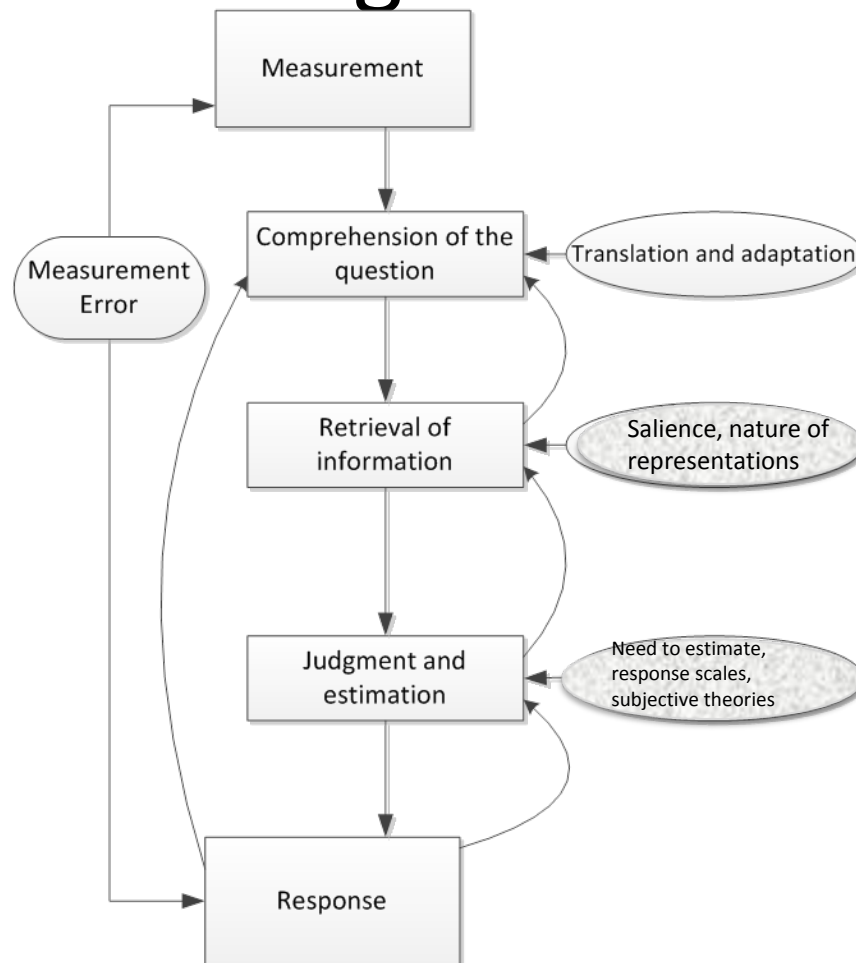
Modified from Groves et al. (2004) and Tourangeau et al. (2000)

Error Sources: Retrieval



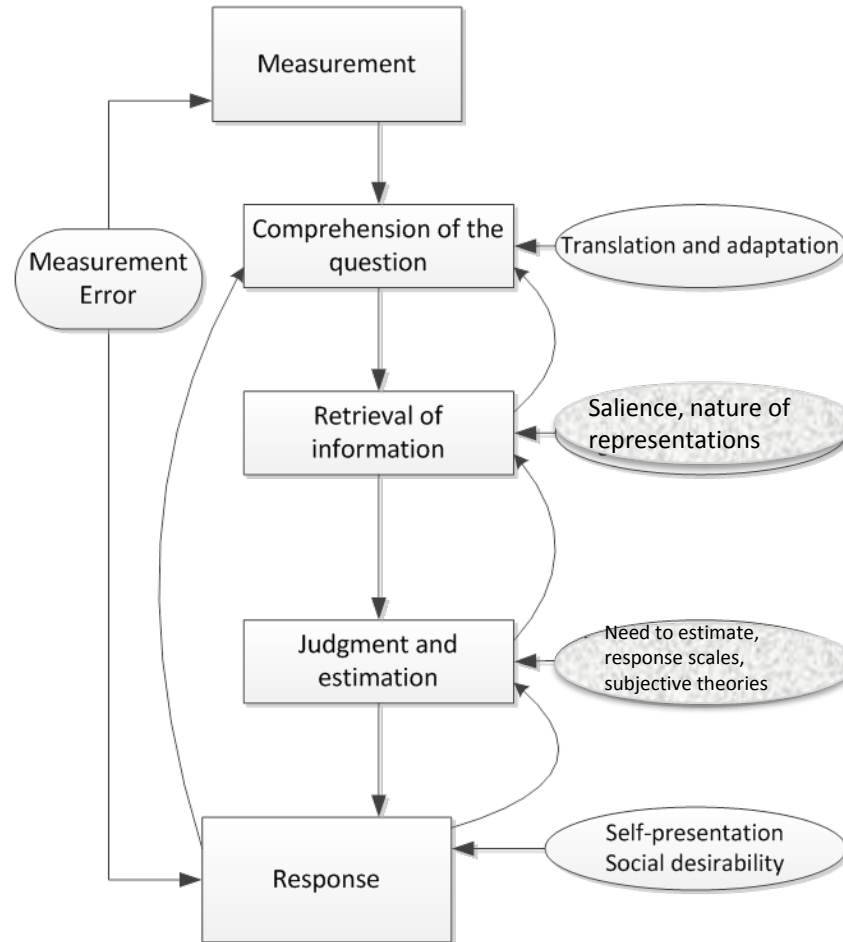
Modified from Groves et al. (2004) and Tourangeau et al. (2000)

Error Sources: Judgment and Estimation



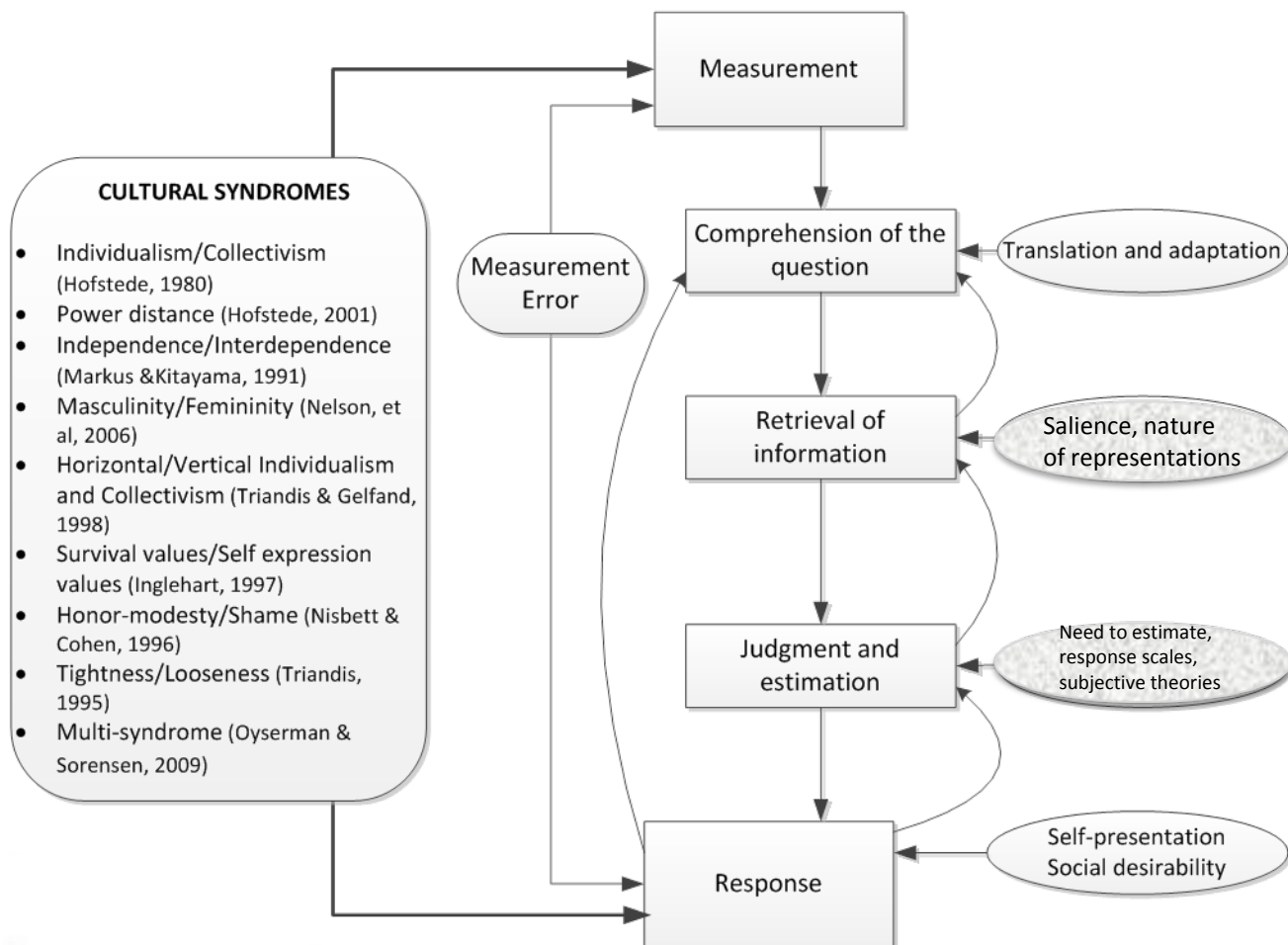
Modified from Groves et al. (2004) and Tourangeau et al. (2000)

Error Sources: Response



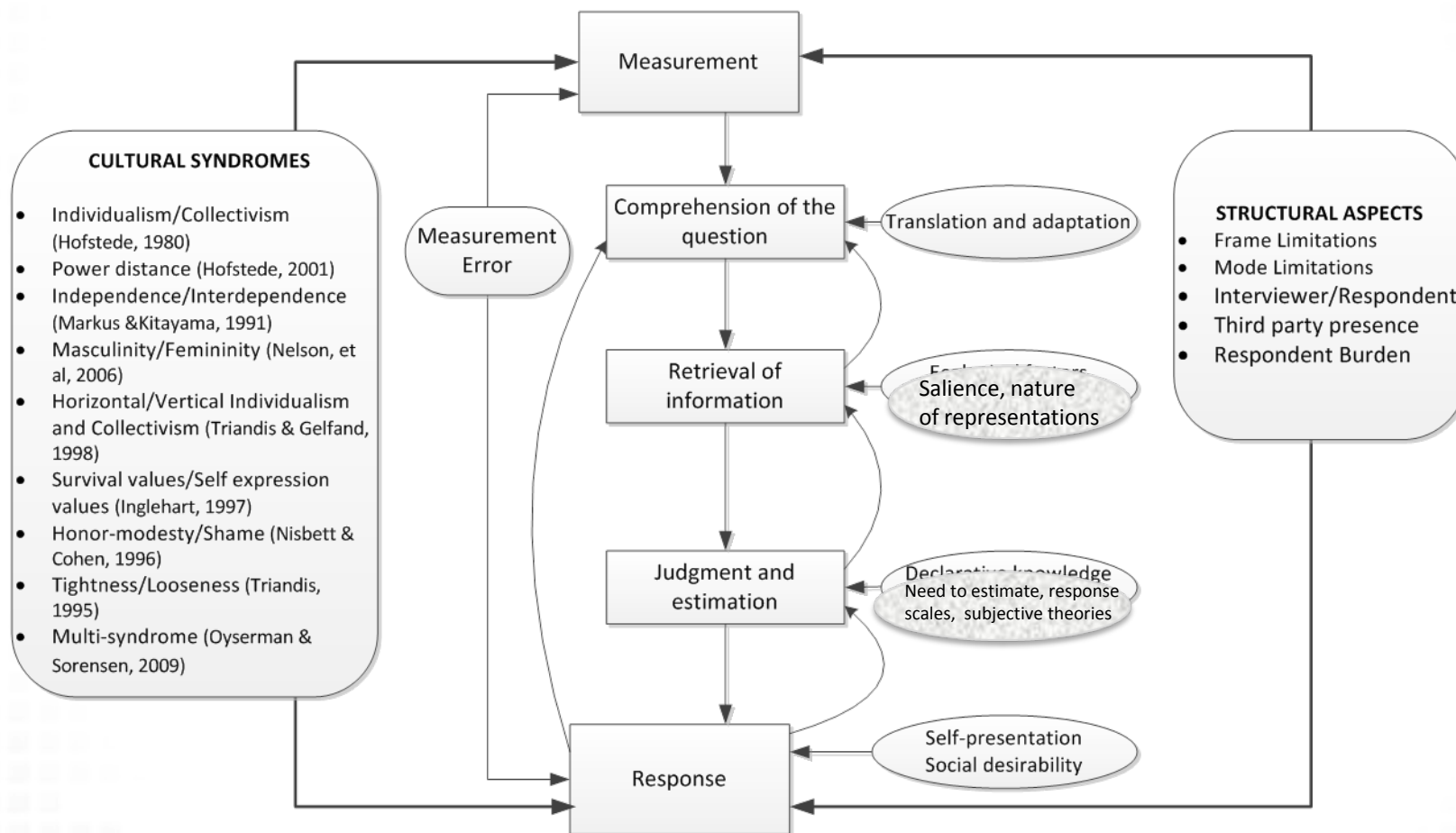
Modified from Groves et al. (2004) and Tourangeau et al. (2000)

Error Sources: Cultural Syndromes



Modified from Groves et al. (2004) and Tourangeau et al. (2000)

Error Sources: Structural Aspects



Modified from Groves et al. (2004) and Tourangeau et al. (2000)



Conclusion

Questions/Possible discussion points:

- Is it important to have an adapted TSE framework for 3M surveys?
- Missing contributions to error that you think should be highlighted?
- Thoughts on the expanded measurement error component?

Thank you very much!

Please send queries to: kcibelli@umich.edu or bpennell@umich.edu