

September 8, 2021

National Institute of Statistical Sciences Fall 2021 Academic Career Fair

Tian Zheng
Professor and Chair
Department of Statistics
Columbia University



Department of Statistics @ Columbia

- ❑ Major turning point - Hotelling's arrival at Columbia in 1931
- ❑ Statistical Research Group during WWII
- ❑ Founded in 1946



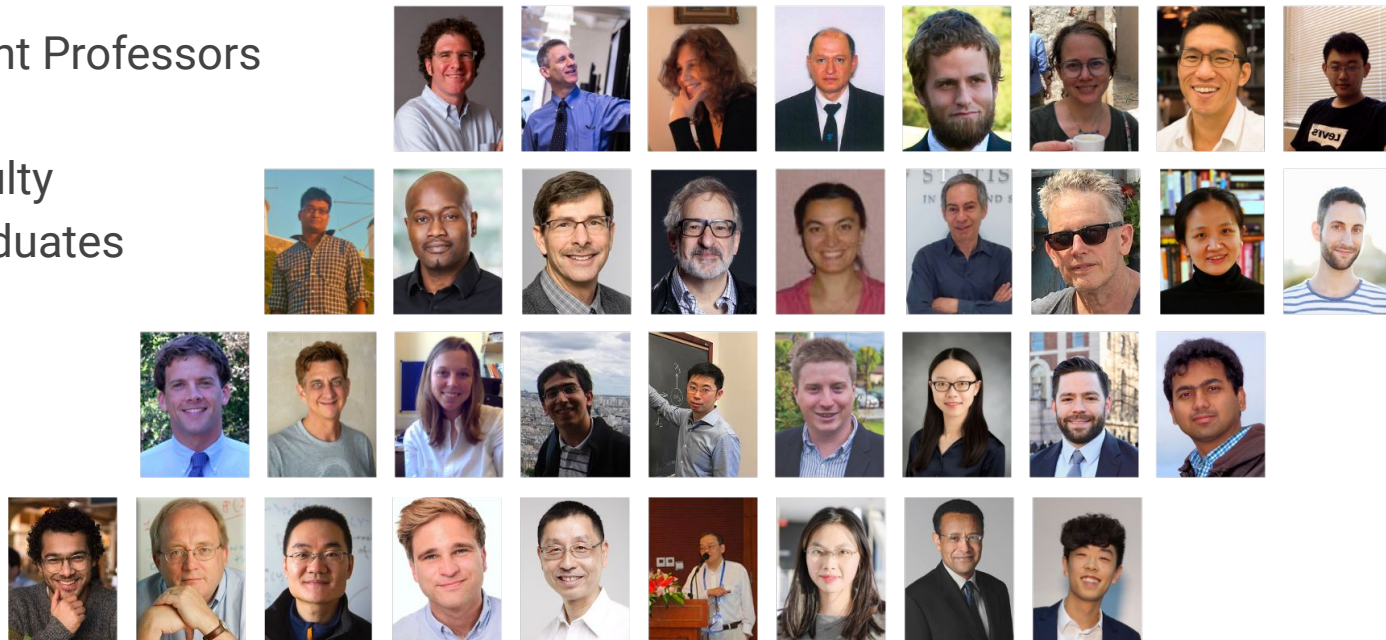
Department of Statistics @ Columbia

- ❑ Faculty of Arts and Sciences
 - ❑ 26 departments in three divisions:
social sciences (6), humanities (13), and natural sciences (9)
 - ❑ Five schools: Columbia College, General Studies, Arts, Graduate School, Professional Studies
- ❑ Located on the Morningside Campus



A vibrant and fast growing department

- ❑ 24 T/TT Faculty
- ❑ 5 Term Assistant Professors
- ❑ 5 Lecturers
- ❑ 6 Affiliated faculty
- ❑ ~200 undergraduates
- ❑ ~700 MA
- ❑ ~60 PHD
- ❑ ~10 Postdocs



The mission of a modern statistics department

- ❑ Research and related advanced training in probability, theoretical statistics, and applied statistics;
- ❑ Instruction in statistical thinking at basic, intermediate, and advanced levels;
- ❑ Leadership in the broader university community, in statistical computing, scientific collaboration and consulting, and instructional design.



Lead with Statistics



COLUMBIA | ZUCKERMAN INSTITUTE
Mortimer B. Zuckerman Mind Brain Behavior Institute



THE EARTH INSTITUTE
COLUMBIA UNIVERSITY



Available positions

❑ Faculty Positions (4+)

- ❑ One Tenure-Track Assistant Professor
 - ❑ All areas of statistics and probability
 - ❑ Teaching load: 2
 - ❑ Start date: July 2022
- ❑ Multiple Term Assistant Professors
 - ❑ Up to four years
 - ❑ All areas of statistics and probability
 - ❑ Teaching load: 3
 - ❑ Start date: July 2022
- ❑ Lecturer
 - ❑ Renewable
 - ❑ All areas of statistics and probability
 - ❑ Teaching load: 6
 - ❑ Start date: Jan 2022 or July 2022

❑ Postdoc Positions (2+)

- ❑ One DSI postdoc in Statistical Machine Learning
 - ❑ Jointly with Data Science Institute
- ❑ Distinguished Postdoc Fellow
 - ❑ “bring exceptional scientists of outstanding potential to Columbia University.”
 - ❑ Two-year fellowship, with no teaching obligations
 - ❑ A competitive annual salary will be supplemented with generous funding for conference travel and research support.
- ❑ More grant-funded positions to come



Q: What are the preferred qualifications for a tenure-track/tenured faculty position in your institution?

- ☐ Potential in Research, especially at the frontiers of Statistics
- ☐ Excellent teacher and mentor
- ☐ A collegial colleague who will contribute to the diversity and excellence of the academic community
- ☐ A future leader: creative thinker, problem solver, self-starter

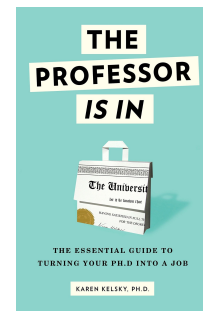
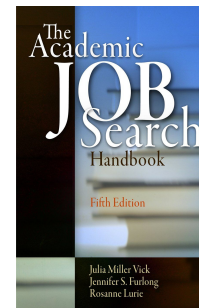
Q: What are the potential distinguishing characteristics of candidates for a tenure-track/tenured faculty position in your institution?

- ☐ Independence and potential for growth
- ☐ Collaboration



Q: What advice would you give to job candidates?

- ❑ Be yourself
- ❑ Be professional
- ❑ Prepare for both “big” and “small” talks
- ❑ Think early about what you need in order to succeed
 - ❑ Department research environment - how you will fit
 - ❑ Resources to pursue hard and challenging problems
 - ❑ Collaborators and mentors
 - ❑ Start-up package
- ❑ Learn about the process and enjoy the process



Q: What advice would you give about how Ph.D. students or post-docs should prepare for the future?

- ❑ “It is a very exciting time for doing research in Statistics!”
 - ❑ Take risks and invest in learning
 - ❑ Look for “true love” in your research
- ❑ “Is an academic career for me?”
 - ❑ Join professional societies and attend conferences
 - ❑ Talk with your professors and mentors about their career paths
 - ❑ Try out formal or informal teaching and mentoring
 - ❑ Understand that everyone has the *imposter syndrome*
- ❑ Find your own work-life balance



The background of the slide is a blue-tinted photograph of the Statue of Columbia, the personification of the United States, seated in front of the main entrance to the Library of Columbia University. The statue holds a torch in her right hand and a tablet in her left. The building's facade features a row of columns and a pediment with the inscription "THE LIBRARY OF COLUMBIA UNIVERSITY".

Join us at Columbia!

NISS Fall 2021 Academic Career Fair - Dept. Statistics @ Columbia
tian.zheng@columbia.edu

