

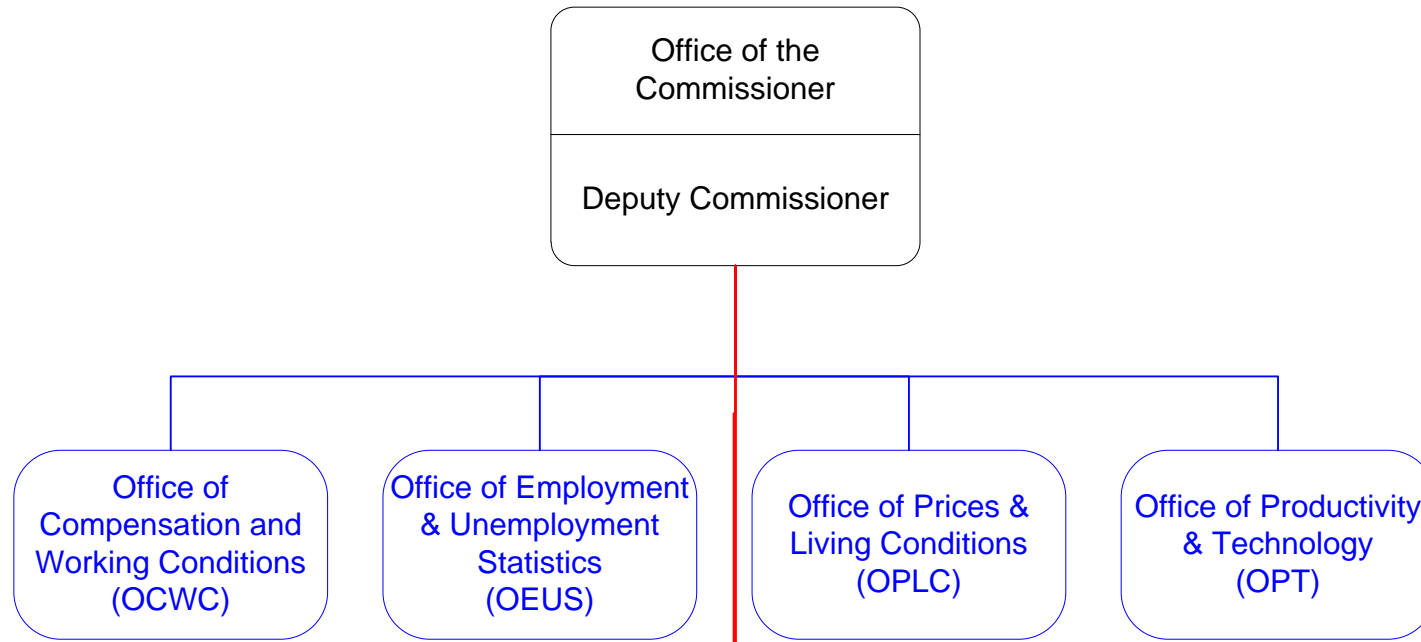
# Imputation at the BLS

---

**MoonJung Cho**  
**Office of Survey Methods Research**  
**U.S. Bureau of Labor Statistics**



# BLS Organization Chart



# ■ International Price Program

Various situations and rules

Unified methods

# ■ Consumer Price Index

Workable documentation

# ■ Consumer Expenditure (CE) Survey

# ■ CE Income

- ▶ Multiple imputation of income data at 2004
- ▶ Ave of MI values for each missing unit
- ▶ Classification and Regression Trees and Forests

# Capturing Imputation Variability

## ■ IPP

- ▶ Bootstrap
- ▶ Each replicate data set should be imputed in the same way as the original data set

## ■ CE Income

- ▶ BRR with 44 replicates
- ▶ BRR five times