

# Programs and Career Opportunities

Cha-Chi Fan

Director, Office of Data  
Development and Standards,  
Bureau of Transportation Statistics

Dec 14 2022



# Agenda

---

- Who is Bureau of Transportation Statistics (BTS)
- What does BTS do
- Statistics Career at BTS
- Desirable Skills
- Current Job Opportunities



# Federal Statistical System

---


There are 13 primary Statistical Agencies

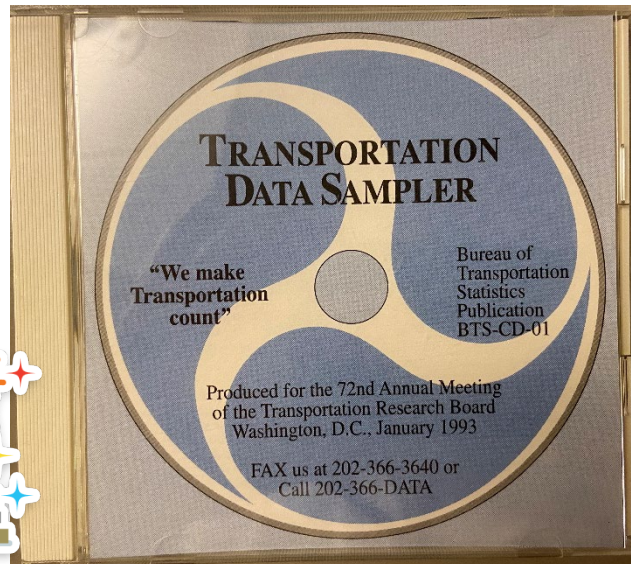
- Bureau of Economic Analysis
- Bureau of Justice Statistics
- Bureau of Labor Statistics
- **Bureau of Transportation Statistics!**
- Census Bureau
- Economic Research Service
- Energy Information Administration
- National Agricultural Statistics Service
- National Center for Education Statistics
- National Center for Health Statistics
- National Center for Science and Engineering Statistics
- Office of Research, Evaluation and Statistics (SSA)
- Statistics of Income (IRS)





# Bureau of Transportation Statistics (BTS)

- The Statistical Arm of the US Department of Transportation
- Founded 1992 (Its our 30<sup>th</sup> anniversary this year!) 
- ~75 Full Time Employees
- Located in the DOT HQ Building in Washington DC
- The original BTS
- First Album in 1993



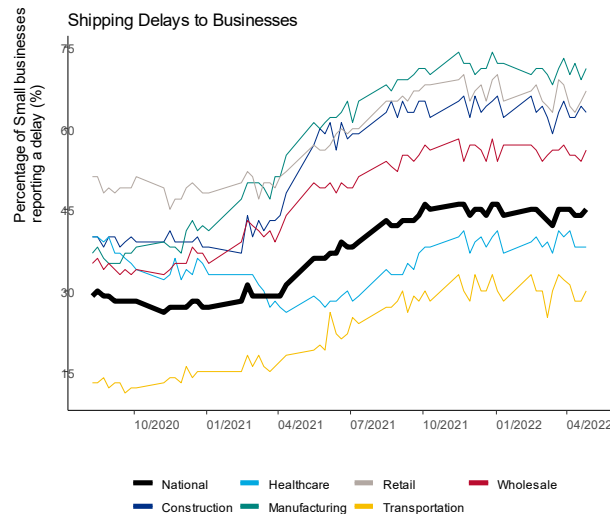
# New BTS Intermodal Freight Data Programs

## Freight Logistics Optimization Works (FLOW):

- Working to answer what data and metric(s) we need to measure supply chain performance.
- Developing a leading indicator to address supply chain challenges early and improve the efficiency and reliability of goods movement across the nation.

## Intermodal Chassis and Marine Container Street Dwell Times and Chassis Out of Service Statistics

- Establishing a new data collection to track chassis usage and availability as mandated in the Ocean Shipping Reform Act of 2022 (OSRA).
- Providing data to address our nation's urgent questions about the state of and causes of shipping delays and congestion.



WH.GOV



MARCH 15, 2022

## Fact Sheet: Biden-Harris Administration Announces New Initiative to Improve Supply Chain Data Flow



BRIEFING ROOM

STATEMENTS AND RELEASES

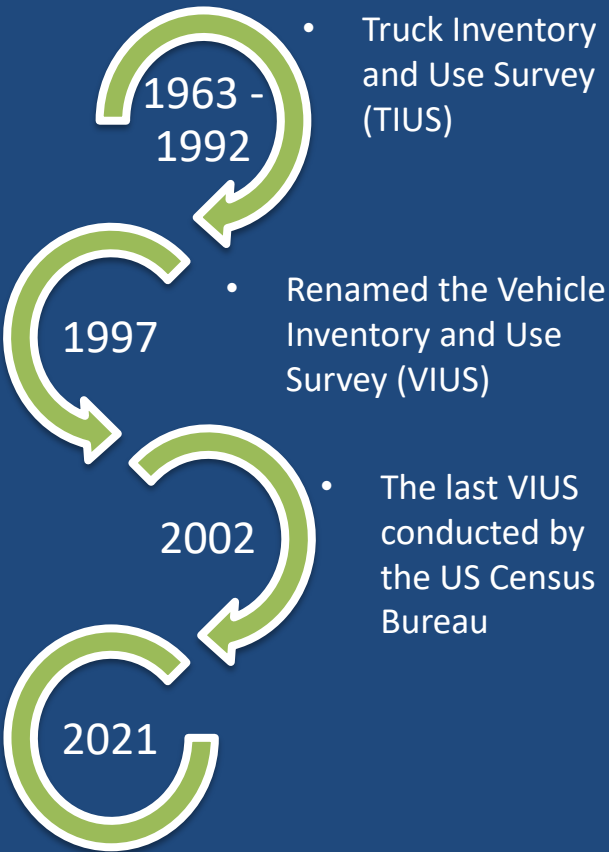
*Freight Logistics Optimization Works (FLOW) Will Speed Up Delivery Times and Reduce Consumer Costs*

*White House to Host Launch Event Today with Key Industry Stakeholders*

Since taking office, the Biden-Harris Administration has been focused on addressing supply chain vulnerabilities and congestion, working to speed up the movement of goods, and lower costs for families. Last year, the ports and the private sector moved a historic amount of goods with record holiday sales and delivery times below pre-pandemic levels. Currently, real retail







Resurrected by BTS with the support of its partners

# VIUS '21

**Results of the 2021 Vehicle Inventory and Use Survey will be released later this year**

Data Tables: September 2023  
Public Use File: December 2023



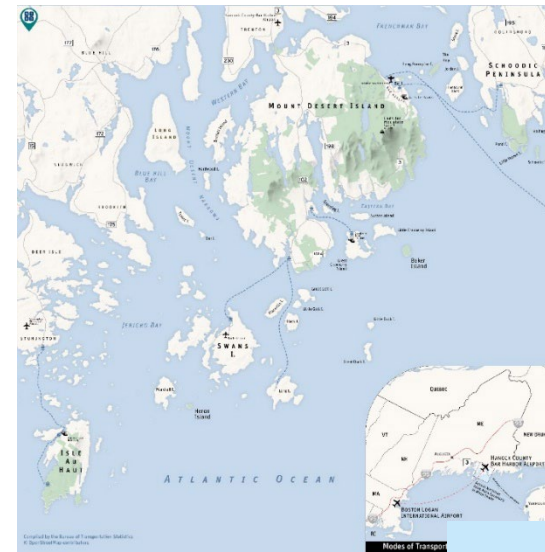
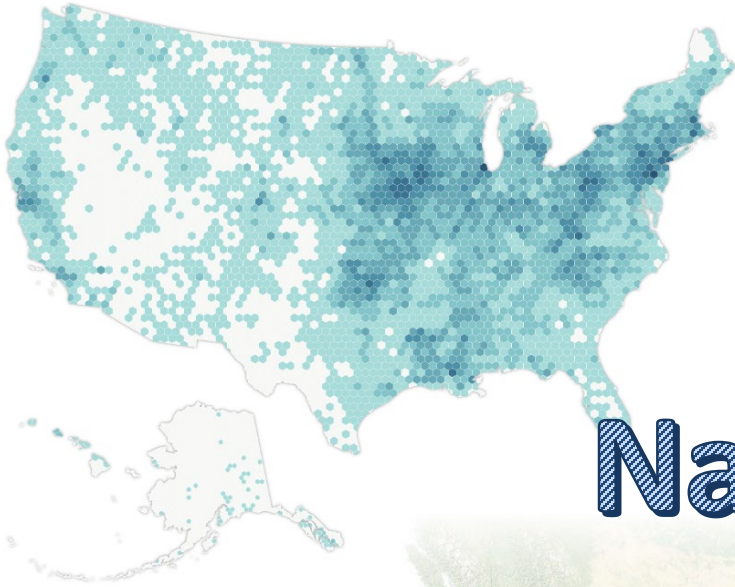
## **BTS is also proud to announce the plans for an Electric Vehicle Inventory and Use Survey (e-VIUS)**

The e-VIUS will collection information on Battery Electric Vehicles (BEVs) on the road, including:

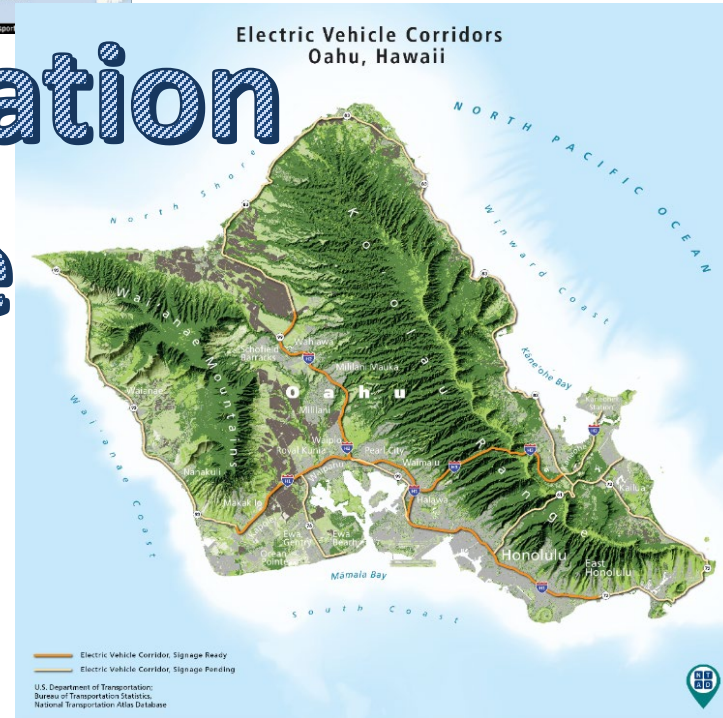
- Annual mileage
- Odometer reading
- Typical trip range of mileage
- And ownership information and characteristics, such as:
  - How the vehicle was acquired
  - How long has it been owned
  - How many other vehicles are owned by the household or business
  - Purpose of use
  - Charging behaviors

Bridges in Poor Condition  
National Bridge Inventory 2021

1 10 25 50 100 200 250



# National Transportation Atlas Database



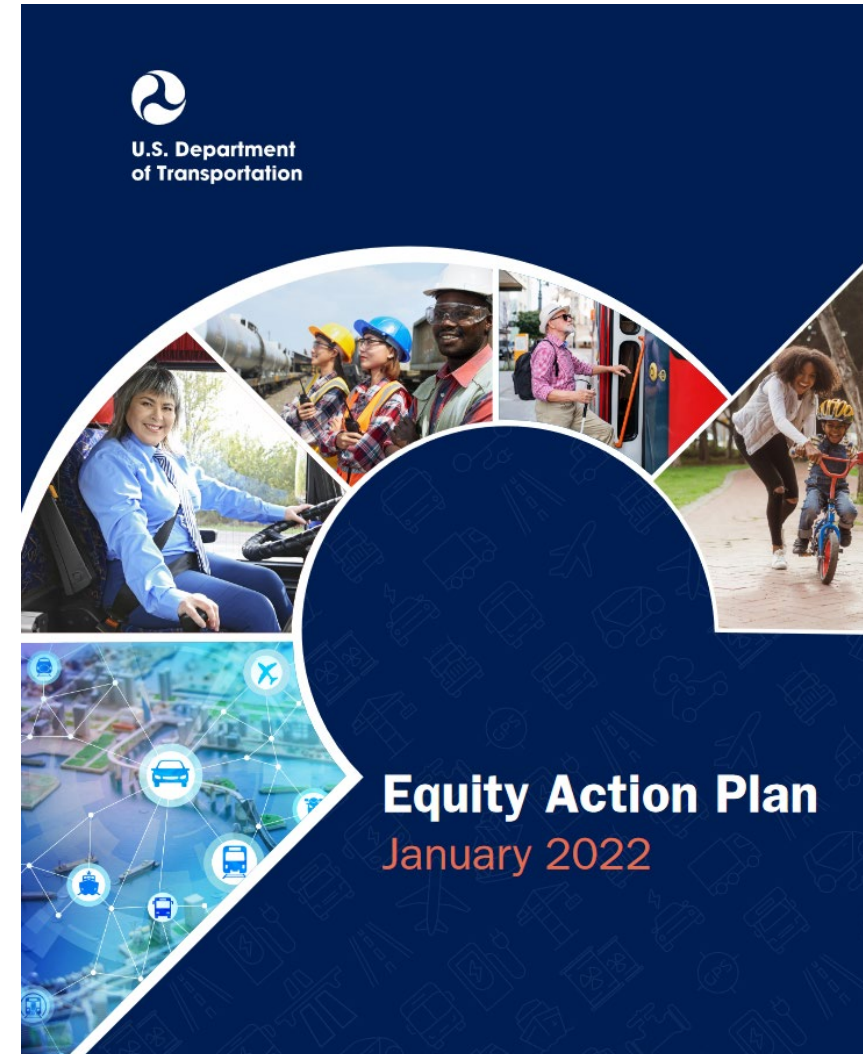


# Transportation Cost Burden

Transportation Cost Burden is the percentage of income that a household spends out of pocket on public and private transportation

As part of DOT's equity action plan, BTS is developing models and data collection to measure transportation cost burden at a neighborhood level

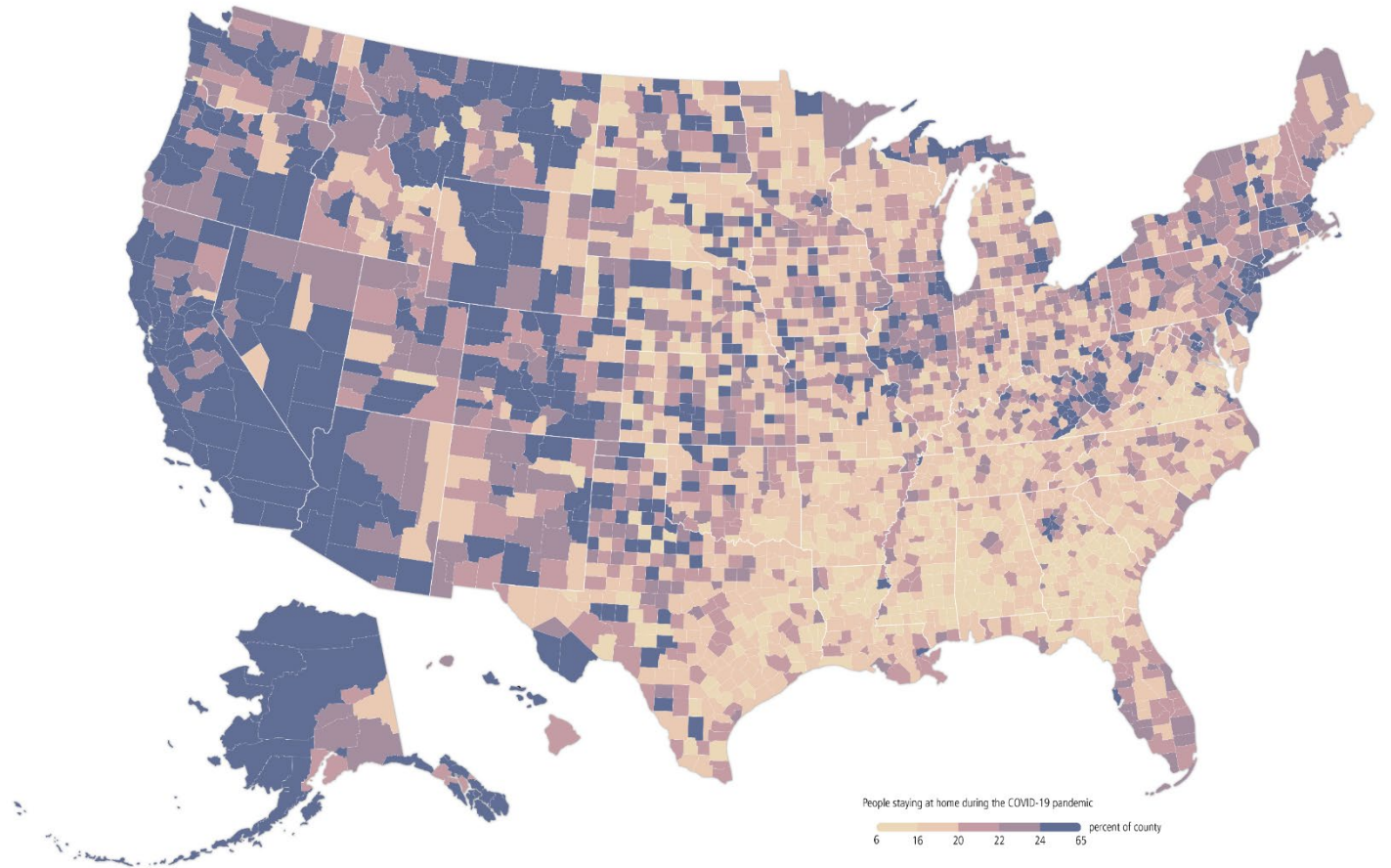
Agencies would be able to use the products to identify locations where transportation burden is disproportionately high and target them for improvement





# COVID Travel Models

- A Collaboration with the Center for Advanced Transportation Technology Laboratory (CATT Lab) at the University of Maryland
- An analysis of location based data to determine travel habits and frequency during different stages of the COVID-19 pandemic
- A more “experimental” style of data collection rather than large survey-driven methods.



# National Transportation Library

49 USC §6304 (2012)

## THERE IS ESTABLISHED...A NATIONAL TRANSPORTATION LIBRARY WHICH SHALL:

- Serve as a central depository for research results and technical publications of the Department [of Transportation]
- Acquire, preserve, and manage transportation information and information products
- Provide reference and research assistance
- Coordinate efforts...with the goal of developing a comprehensive transportation information and knowledge network

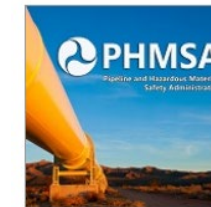


### • Example collections:



#### Federal Railroad Administration

Reports from the Federal Railroad Administration (FRA) programs.



#### Pipeline and Hazardous Material Safety Administration Colle...

Final reports from the Pipeline and Hazardous Material Safety Administration Office of Pipeline Safety.

<https://rosap.ntl.bts.gov/>



# Statistics Career at BTS...

- Federal positions
  - Non-supervisory: GS9 to GS14
  - Management & Leadership: GS15 to SES
- Fellowship and internship
- Various challenges and opportunities
- Work-life balance
- Small agency = large family





# Desirable Skills

Computation	Statistics
<ul style="list-style-type: none"><li>• Lots of data ingestion</li><li>• Error checking/format checking</li><li>• Visualization</li><li>• Multiple database schema</li><li>• GIS</li></ul>	<ul style="list-style-type: none"><li>• Sampling, estimation, Imputation</li><li>• Total survey error</li><li>• Statistical modeling and forecasting</li><li>• Econometrics</li></ul>
Research	Soft Skills
<ul style="list-style-type: none"><li>• Emerging statistical methods</li><li>• Data collection program evaluation and improvement</li><li>• Use and evaluation of unstructured data</li><li>• Disclosure avoidance methodology</li></ul>	<ul style="list-style-type: none"><li>• Time management</li><li>• Problem solving</li><li>• Good team player</li></ul>



# BTS is hiring now!

- Direct hire authority for statisticians
  - **Two Statisticians (GS14)** who will manage data collection programs and lead statistical methodology developments
  - **One Statistician (GS11 – 13)** who is an expert in statistics and survey methodology to assist and improve national data collection programs
  - **One Statistician (GS11 – 14)** who will assist and/or lead transportation data analysis
  - **One Spatial Statistician (GS13 – 14)** who will conduct spatio-temporal statistical analysis using sensor data
- Direct hire authority for economists
  - **One Financial Economist (GS12 – 14)** who will serve as a leading expert in local, state, and federal transportation finance
  - **One Equity Economist (GS12 – 14)** who will conduct studies to understand the equity implications of transportation
- Direct hire authority for transportation specialists (who will play an important role in planning and conducting studies to help understand various transportation topics)
  - **One Aviation Analyst Transportation Specialist (GS12 – 13)**
  - **One Climate Analyst Transportation Specialist (GS12 – 13)**
  - **One International Transportation Specialist (GS12 – 13)**
  - **One Supply Chain Transportation Specialist (GS13 – 14)**



**Find a new career with us:**  
**<https://www.bts.gov/jobs>**

**Contact us at:**  
**BTSjobs@dot.gov**

- Oak Ridge Institute for Science and Education (ORISE) Fellowship
  - <https://zintellect.com/Catalog>
- Summer Transportation Internship Program for Diverse Groups (STIPDG) Internship
  - <https://www.fhwa.dot.gov/careers/stipdg.cfm>







# QUESTIONS?

Cha-Chi Fan

[chachi.fan@dot.gov](mailto:chachi.fan@dot.gov)