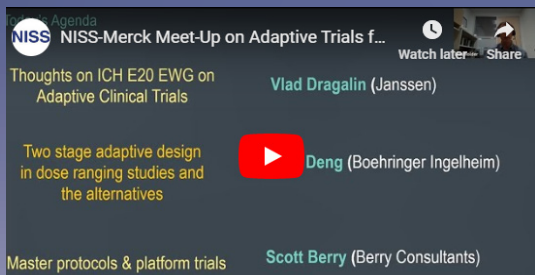


# Parameters

WINTER | 2020

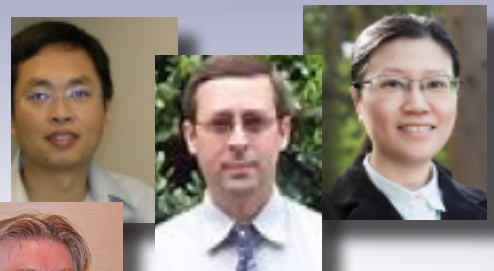


Collaboration Between Academia and Industry

Recent Approaches to Adaptive Trials the Focus of NISS/Merck Meet-Up



Opportunities in Statistics: Career Fairs Highlight Government and Industry Sectors



Careers in Statistics Launched from NISS Postdoc Experience



NISS is Getting Ready for JSM - Save the dates!





Welcome to the Winter 2020 edition of the NISS Parameters Newsletter

As we watch the world respond to a growing crisis from the emerging epidemic caused by the newly discovered coronavirus, or 2019-nCoV, we rediscover how uncertainty and the unknown can create fear in the public. As of this writing, some 70K people have been reported infected worldwide, and 1,770 have died so far from the disease, about 2.5%. By contrast, the flu (influenza) causes an estimated 19M illnesses in the U.S.A. and 10K deaths this season, or 0.05%. So the 2019-nCoV death rate is roughly 50 times higher than that of the common flu, hence the concern. However, the risk of infection in the US, if the epidemic can be contained, is still exceedingly low. The need for reliable data remains critical for making informed policy decisions as these

numbers change.

**NISS Events:** NISS has sponsored numerous successful events; some aimed specifically for our affiliates and others open to the entire profession. NISS sponsored a virtual meetup to discuss ‘Collaborations between Academia and Industry’ as summarized on page 3 below. There are numerous barriers that inhibit the full range of collaborations that could occur, including financial issues, who owns potential intellectual property, and publication restrictions. The quarterly NISS-Merck Meetup tackled the controversial and complex topic of Adaptive Trials for Drug Development. As described on page 5 in this newsletter, these adaptive trials have the potential to both limit the exposure to the less beneficial treatment and also provide more patients access to the more beneficial treatment regimen. They are also potentially more cost effective when the winning treatment reveals itself early in the trial. NISS sponsored the first Virtual Government Career Fair, with speakers from the Bureau of Labor Statistics, the US Bureau of the Census, and the National Agriculture Statistics Service. As noted (page 4 below) these agencies provide very high quality statistics demanded by the important impacts their output has on the US economy and health of our democracy, and thus the jobs provide deep satisfaction to those engaged in these efforts.

NISS was also a sponsor of the 13th International Conference of Health Policy Statistics. Two excellent keynote speakers, Daniel Polsky, Distinguished Professor of Health Policy and Economics, Johns Hopkins University and Susan Murphy, Professor of Statistics and Computer Science Harvard University framed the conference with stimulating talks challenging the audience to contribute to improving society and health through improved methods.

**NISS Upcoming Events:** The NISS affiliate program has a strong tradition of bringing experts together to address needs of the profession, many on a regional basis. The 7th Annual NOGGINS workshop, and the 2020 Bradley Lecture at U Georgia given by Bin Yu (Berkeley), the 13th Annual conference on Statistical Issues in Clinical Trials: Cluster Randomized Clinical Trials (CRTs): Challenges and Opportunities, at U Penn, and the 8th Annual Workshop on Biostatistics and Bioinformatics, at GSU, are all regional gatherings available to NISS affiliates, who can utilize their Affiliate Award Funds to attend. Later this spring, NISS has co-sponsored the Conference on Statistical Learning and Data Science/Nonparametric Statistics (SLDS 2020), in Newport Beach, CA, and the 2020 Quality and Productivity Conference in Tallahassee, FL. See the [www.niss.org/events](http://www.niss.org/events) for the up-to-date schedule.

On other fronts, there are a couple of very exciting events in the works. We are planning upcoming Ingram Olkin Forums under the theme “Statistics Serving Society” to address the opioid crisis and to see how the statistics community can contribute to methodologies needed to understand its origin, prevention, and recovery. A small one-day workshop is planned for this spring to engage the community, and then followed by a larger two-day forum. A future topic for the fall will focus on the ethics of Artificial Intelligence (AI) or algorithm fairness, which has become a growing concern as AI is being implemented in many diverse applications, from banking to criminal justice. [Stay tuned for more information!](#)

If you are organizing a local or regional conference or workshop, please let us know if you would like NISS to co-sponsor it and advertise it on our platform and through our network and affiliates.

NISS affiliation demonstrates a commitment to outreach with other academic institutions and across government and industry sectors. Half of the cost of an academic affiliate membership can be utilized as travel expenses and registration at NISS-sponsored events for faculty and graduate student participants, who build their career network by engaging in these activities. To find more information about our affiliate program, please see our [affiliate information page](#) on our website or contact me.

by Jim Rosenberger  
NISS, Director

## ABOUT NISS

The National Institute of Statistical Sciences (NISS) is a national institute that delivers high-impact research in science and in public policy by leveraging the rich expertise of its staff with that of its base of affiliated organizations in academia, industry, and government. NISS works on issues where information and quantitative analysis are keys to solutions and decisions. NISS functions in three ways: as an expert advisor, as a basic researcher, and as a collaborator.

## OUR MISSION

The National Institute of Statistical Sciences (NISS) is an independent research organization that serves as a neutral, objective expert in delivering research in science and public policy to its affiliates in academia, industry and government. NISS identifies, catalyzes and fosters high-impact cross-disciplinary and cross-sector research involving the statistical and data sciences.



## NISS Affiliate Luncheon

Sunday, August 2 11:30 - 2:00

Each year at JSM, NISS Affiliates get together for a luncheon. The agenda includes time for NISS Affiliates to connect and get to know one another. In addition, a topic of current and of keen interest is identified and addressed by invited speakers. It is always exciting to hear from individuals who sit at the center of these topics and the discussion that follows!

Also, we are very excited about hearing more from our affiliate colleagues. It is important for NISS to understand what is on the minds of our affiliates. This helps tremendously in planning future events that will serve the needs of everyone.

**Who Can Attend?** Each Affiliate is welcome to send one or two representatives to the luncheon. Typically the department head and the liaison however talk to your NISS Affiliate Liaison for more information about attending. All Affiliate Liasons will receive an email invitation.

Interested in becoming a NISS Affiliate and would like to attend this luncheon? Please do not hesitate to contact either James Rosenberger, NISS Director or Lingzhou Xue, NISS Assistant Director, Affiliates Coordinator.



## NISS / SAMSI Reception

Monday, August 3 6:30 - 8:00

The annual NISS/SAMSI reception is a great time to visit with colleagues that you might not have seen in a while and where new connections are made and new friendships and collaborations begin. Each year NISS Affiliates and friends of NISS and SAMSI look forward to this event.

The prestigious Jerome Sacks Award for Cross-Disciplinary Research is presented at this reception as well as the Distinguished Alumni Award along with the Distinguished Service Award.



## NISS Writing Workshop for Junior Researchers

August 2 & 4, 2020

Once again this very popular short course will be hosted by NISS! If you are a recent graduate of a doctoral program and want to improve your communication skills - then this event is for you!

The goal of the workshop is to provide instruction for writing journal articles and grant proposals. Participants will be required to provide a recent sample of their writing, which will be reviewed by a senior mentor. The sample could be a current draft of an article to be submitted for publication or an early version of a grant proposal. Senior mentors will be former journal editors and program officers, who will critique the submitted material and provide individual feedback. Participants will be expected to initiate a revision in response with additional feedback from their mentors. **Deadline for the Writing Workshop application submission is June 1, with**

notification of acceptances on a rolling basis no later than June 20.

Comments from participants:

*"The writing workshop was tremendously helpful! Thank you so much for organizing this workshop and helping us a lot. Thank you so much for sharing all the slides too. I am very grateful to take all advantages from NISS writing workshop."*

*"Thanks for your thorough guidance in the NISS Writing Workshop! I found that the one-to-one mentoring is very helpful for us to get insights into our shortcomings in academic writing. I really appreciate your work in organizing such a wonderful event."*

See the [NISS Website](#) for additional information and how to apply. Send in your materials early - this is a valued and very popular workshop!

# COLLABORATION BETWEEN ACADEMIA AND INDUSTRY THE FOCUS OF ACADEMIC AFFILIATE MEET-UP

NISS

On Friday, February 7, 2020 NISS gathered a number of experienced, leading statisticians that represented a variety of differing perspectives to talk about the challenges and issues that arise in research projects that involve a collaboration between academia and industry. During this conversation examples of best practices were also shared.

Moderated by **Sumanta Basu** from Cornell University, the panelists for this webinar topic included **Rebecca Doerge**, Dean of the Mellon College of Science at Carnegie Mellon University, **Sam Woolford**, Professor Emeritus of Statistics at Bentley University, **L.J. Wei**, Professor of Biostatistics at Harvard University and **Victor Lo**, Head of Data Science & Artificial Intelligence, Workplace Investing, Fidelity Investments.

**Rebecca Doerge's** remarks were based on her reflections on 21 years of experience at Purdue University where as Head of the Department of Statistics she negotiated consulting with industry and her 3.5 years as Dean of the College of Science at Carnegie Mellon University where as Dean she was involved in negotiations with industry on behalf of her college and university. Her understanding of the challenges involved in collaborative research became evident through her description of the expectations posed on both faculty and students. Who does the work? Who owns the work? And where is the work done? These simple questions raised sometimes thorny predicaments that need to be sorted out. She concluded with an example and a number of issues to think about as part of this process.

**Sam Woolford** addressed this topic from a very different perspective. Sam spent much of his academic career at Bentley University, an institution known for its programs in business analytics, and having served as Director of Bentley's Center for Business Analytics which provides consulting services to support business and non-profit organizations. Sam's remarks targeted the intriguing advantages and challenges that result from consulting efforts generated by this service.



Sumanta Basu (Cornell) moderator; Speakers: Rebecca Doerge (Carnegie Mellon), Victor Lo (Fidelity Investments), Sam Woolford (Bentley) and L.J. Wei (Harvard).

Sam was followed by **L.J. Wei**, Professor of Biostatistics at Harvard University. L.J. prefaced his by reminding the audience that his experience has been primarily in the field of biostatistics, however, his overall understanding of the issues based on his long experience in collaborative projects involving work with industry were direct and clear based on his years of work. He demonstrated how times have changed and along with this change the issues and approaches that one needs to consider have changed as well. L.J. highlighted three examples of this work.

Finally, **Victor Lo**, Head of Data Science & Artificial Intelligence, Workplace Investing, Fidelity Investments, was able to provide an industry perspective on the topics that had been discussed. After providing an insightful overview of the opportunities and knowledge in the business sector, Victor presented suggestions for developing a symbiotic relationship highlighting ways in which industry could advise academia and others where academia can partner with industry. He also featured the opportunities for students in collaborative research with industry and provided plenty of resources that follow up with details and further food for thought.

Before the session concluded Sumanta presented the panelists with a number of intriguing questions that were asked by participants. This gave the panelists a chance to actively join in conversation that further explored the issues that these questions had provoked.

On the NISS website you will find a recording of this session as well as links to the speaker's slides. Please share with colleagues!

*NISS continues to work to identify topics of interest to statisticians from all different sectors and then gather experts to contribute to a conversation that helps to not only inform and but also provoke further thinking on these topics. Keep your eye on the NISS website for future events that might be of interest to you or your colleagues!*



# NISS GOVERNMENT CAREER FAIR OUTLINES OPPORTUNITIES FOR STATISTICIANS!

NISS

Being an independent partner is essential for statisticians working within one of the thirteen principle government statistical agencies. This was one of the remarks that **Wendy Martinez**, (Director of the Mathematical Statistics Research Center, Office of Survey Methods Research with the Bureau of Labor Statistics) shared as she kicked off the third NISS Virtual Career Fair. Taking place over the lunch hour on Wednesday, January 8th, this fair focused on the employment opportunities available within the United States Government. Not only did Wendy highlight the types of job opportunities available within the Bureau of Labor Statistics and the U.S. government in general, but she also provided valuable insight and advice for candidates regarding monitoring announcements, the application process, resume writing and more.

In addition to Wendy, **Jonah Wong** (Mathematical Statistician, Methodology and Standards Council, Staff Recruitment and Retention, US Census Bureau) reviewed the types of statistical work that the US Census is involved in, the employment opportunities associated with these activities and how many and where US Census Bureau employees do this work. It became very apparent that the US Census Bureau is involved in much more than the decennial census that we are all familiar with.

**Jeff Bailey** (Branch Chief of the Summary, Estimation, and Disclosure Methodology Branch at the National Agricultural Statistics Service) provided similar remarks as the other speakers from the point of view of statistical responsibilities to provide timely, accurate, and useful statistics in service to agriculture in the United States. He also highlighted some of the challenges that he and his colleagues face including falling response rates, improving repeatability, efficiency, transparency, and measures of error as well as the development of questionnaires for new topics.

The moderator of this session, **Nathan Cruze**, (Mathematical Statistician at USDA's National Agricultural Statistics Service), provided his own experienced advice in addition to doing a superb job of fielding questions from participants.

In addition to the remarks and comments from each of the presenters, the information and links contained within the slides that the panelist shared are a valuable asset for anyone considering a position as a statistician within the US government.

Check the [NISS Events webpage](#) for up to date event info!



Nathan Cruze (NASS), moderator; Wendy Martinez (BLS), Jonah Wong (US Census) and Jeff Bailey (NASS)



Like earlier career fairs, this first government career fair was available only to students and faculty (at all levels) from NISS affiliates institutions. Consequent links to the recording and slides used by the presenters will not be made available to the public until early February. If your institution is interested in becoming a NISS Affiliate, please fill out this form to request more information.

Keep your eyes open for the next NISS Virtual Career Fair as NISS has a number already in the planning stages!

## CAREER FAIR SERIES - RESOURCES PROVIDED BY NISS

Looking for advice for how best to advance a statistics career? What types of job opportunities exist for statisticians/data scientists/analysts in various organizations?

Over the past several months the National Institute of Statistical Sciences (NISS) has been doing just that - gathering experienced, senior statisticians that represent a variety of research, business, healthcare, government and other sectors and asking them to speak to the questions above in a series of virtual career fairs. NISS is making these recordings available to the public to help students consider their career options and advisors guide their students and they also can be used by individuals who are considering a career change across different employment sectors.





# RECENT APPROACHES TO ADAPTIVE TRIALS FOR DRUG DEVELOPMENT THE FOCUS OF NISS/MERCK MEET-UP

# NISS

Vladimir Dragalin (Janssen), QiQi Deng (Boehringer-Ingelheim) and Scott Berry (Berry Consultants) were the presenters for a balanced view of the benefits and ongoing issues of concern related to adaptive designs to an audience of over 200.

Adaptive clinical trials use accruing data to make changes in the ongoing trial. Changes based on early information can increase efficiency, by limiting resources to likely failures and increasing them for promising interventions. Such changes are also likely to be beneficial from the patients' perspective. Although adaptive trials have been part of drug development for about 30 years, there is still some confusion over the best ways to utilize them.

Vladimir Dragalin's presentation was entitled "Thoughts on ICH E20 EWG on Adaptive Clinical Trials." Vladimir reviewed his very recent work with the International Council for Harmonisation of Technical Requirements for Pharmaceuticals for Human Use (ICH) and the E20 proposal that this group is currently working on that focuses on adaptive clinical trials. His insights regarding the bringing together of both regulatory authorities and pharmaceutical industry representatives to discuss the scientific and technical aspects of adaptive clinical trials were extremely informative.

QiQi Deng, (Boehringer-Ingelheim) was the second speaker. Her talk focused on the particular nuances of the "Two-stage adaptive design in dose-ranging studies and the alternatives." While combining a proof of concept study with the dose-ranging study into one trial has its advantages, the risks are apparent. QiQi instead outlined the details of a two-stage stepwise design and discussed the advantages of this innovative alternative.



Scott Berry was the final speaker of the session. His talk was entitled "Innovating the Clinical Trial: Adaptive and Platform." He began by providing general comments and insights regarding adaptive trials and expertly followed this up by walking through a number of innovative examples that highlighted new approaches including seamless, adaptive enrichment design, adaptive platform trial, and others.

As with all of the NISS/Merck Meet-Up events, Dan Holder (Merck) served as general organizer and was moderator of the session.

*Next NISS/Merck Meet-Up!*  
*April 27, 2020 - "Bayesian Statistics in Drug Development"*

Featured Speakers include:

Frank Harrell, (Vanderbilt University)  
Amy Xia, (Amgen)  
Telba Irony, (FDA)

[REGISTER TODAY!](#)

## WELCOME NEW NISS AFFILIATE!

### [George Mason University, Department of Statistics](#)

George Mason University is the largest public research university in Virginia, classified at the R1 highest research activity level, with an enrollment of over 38,000 students studying in over 200-degree programs. Mason is an innovative, entrepreneurial institution with national distinction in a range of academic fields.

The Department of Statistics within the Volgenau School of Engineering currently houses 18 full-time faculty. It offers a B.S. in Statistics, three M.S. degrees: Statistical Science, Biostatistics, and Data Analytics Engineering Concentration Statistics; and a Ph.D. degree in Statistical Science, with excellent funding opportunities. The Department of Statistics faculty members are world-renowned leaders in statistics, biostatistics, and data analytics, although it is a young department founded in 1992.



Not a NISS Affiliate?  
[Become A NISS Affiliate Today!](#)

A postdoctoral appointment gives you the opportunity to build a solid foundation and it also gives you a chance to explore, listen and learn. All of this involves hard work but the experience is worth it say former NISS postdocs. Here are the comments from a few whose career started out at NISS.

*"The postdoc gave me a different perspective of what type of problems to tackle and how to tackle them. In that sense it had a profound long-term effect on my career."*

**Matthias Schonlau**  
(NISS postdoc 1997-1999)

Matthias is now Professor in the Department of Statistics and Actuarial Science at the University of Waterloo, Ontario, Canada. Prior to his current appointment he spent 14 years outside of academia at the RAND Corporation, the National Institute of Statistical Sciences, AT&T Labs and the German Institute for Economic Research, DIW. He has served as director of the Survey Research Centre at the University of Waterloo and as head of consulting at the RAND corporation. He was on the board of the European Survey Research association. His interests include applied survey research at the interface to statistical learning. His 70+ peer-reviewed papers have been cited more than 13,000 times.



*"I really enjoyed being part of an interdisciplinary team... Team-based research makes the statistician an equal player at the table and recognizes the intellectual contributions above and beyond his/her statistical expertise."*

**George Luta**  
(NISS Postdoc 2006-2009)

George is now Professor of Biostatistics, Bioinformatics and Biomathematics at Georgetown University. He is author of 118 peer-reviewed articles, has served as guest editor or co-editor of several prestigious journals and been involved in 37 grants and contracts, PI on 3 projects and co-Investigator on 34 projects.



Perhaps most important is the ability to communicate on a variety of levels. Initially, being able to articulate a vision for research ideas all the way through sharing results in a meaningful way that convinces others of the importance of your work.

*"I had a great time at NISS. My work with Dr. Nell Sedransk was on a project in cancer proteomics and through this we were able to publish couple of interesting papers in highly respected journals. I often recall those valued moments at NISS. They were colorful and invaluable."*

**Xingdong Feng**  
(NISS Postdoc 2009-2011)

Xingdong is now Full Professor of the School of Statistics and Management, Shanghai University of Finance and Economics, China. Since his time as a NISS postdoc he has taught a wide range of courses in statistics and data analysis. He has also been involved in authoring many research papers that focus on quantile and ridge regression.



It makes sense that young researchers seek to involve themselves in as many opportunities as possible to practice these skills. Throughout the years NISS has mentored many young researchers. Many of these have gone on to develop significant careers as research statisticians in academia, industry and government.

A postdoc position also gives you a chance to sharpen a range of skills that you might not have had a chance to experience in an academic program, skills that are critical in real-world work research environments. For instance, leadership, management, teambuilding and communication are all areas that researchers must be able demonstrate proficiency.

*"I had the chance to work on real projects from industry and developed further methodologies based on the applied research. This experience had a big impact on my later research. I also communicated with many excellent scholars from the universities who gathered at NISS or SAMSI workshops, conferences, and other events. This was very rewarding as it expanded my views about statistics and beyond. I'm proud of being a postdoc at NISS!"*

**Yingchun (Jasmine) Zhou**  
(NISS Postdoc 2007-2009)

Jasmine is now Professor of Statistics at East China Normal University, Shanghai, China. Since her time as a NISS postdoc she has authored many peer-reviewed research papers, has been involved in a wide variety of grants and has received awards for her teaching.



Experience in any of these areas is a huge asset for new researchers. Examples from NISS Postdoc positions include developing leadership in helping to define the direction or the management of a project, working as an equal partner in a research team to help to determine and evaluate outcomes.

Hey there! Stay connected with us on Twitter for the latest events information!



@NISS\_DataSci

LinkedIn

Do you know that NISS is also active on LinkedIn?

NISS | National Institute of Statistical Sciences

# NISS IS HIRING! JOIN THE NISS RESEARCH TEAM!

NISS projects develop and implement new statistical methodology for high priority federal agency problems and analyses of massive datasets.

- Appointments will be for one year with expectation of renewal.
- Positions will remain open until filled.

## MULTIPLE POSTDOC / EARLY CAREER RESEARCHER POSITIONS AT NISS

The National Institute of Statistical Sciences (NISS) is a research institute focused on bringing advances in statistics to **high priority projects with national / international impact**. Early career researchers at NISS have the opportunity to work with researcher leaders to develop innovative statistical solutions to high impact problems.

**Research Challenges:** Develop, implement and test innovative statistical methodologies, apply statistical thinking and technology to high-profile social, economic and survey data and conduct research to meet one or more of five objectives: 1) innovative methodology for modeling and estimation for survey data, 2) uncertainty quantification and computation, often for combining different sources of uncertainty, 3) design and analysis of simulations and experiments to validate new methodology and models, 4) new methodology for analysis and interpretation of Big Data, and 5) complex analysis of federal Big Data to answer specific substantive questions.

## NEW MODELING and AI PROJECTS AT NISS! CAREER OPPORTUNITIES with HIGH IMPACT!

The National Institute of Statistical Sciences (NISS) seeks to make multiple appointments of (postdoctoral) Research Associates for high-impact projects in two areas. The first will **develop and implement high-dimensional methodology and AI models** for data used in chief US economic indicators for the agriculture sector. Projects will integrate different data types from multiple sources to optimize estimation and uncertainty quantification. The second area includes **projects in statistics and quantitative methodology**: addressing technical challenges in the development and testing of innovative statistical methodologies for advancing research in analysis of high dimensional data and images, including for example process data (key strokes/ time stamps) from assessments. Research Associates will also create templates and exemplars for analyzing and reporting these analyses.

Spread the Word - Share with Colleagues!  
**APPLY TODAY!**

What Current & Recent Postdocs have to say about working at NISS!

*"My experience with NISS has provided me with way more opportunities than I expected. There is so much more that can be accomplished both by me personally as well as the potential for finding solutions for the projects that I am involved in."*

Luca Sartore, NISS Research Associate

*"I appreciate all the opportunities that NISS has given me to learn and to grow as a researcher as well as allowing me to apply my knowledge and skills to study interesting educational phenomena."*

Ya Mo, NISS Research Associate

*"There is a wealth of research on the factors impacting survey response. However, much is still to be known and I hope to contribute scientifically to this body of knowledge."*

Joe Rodhouse, Former NISS Research Associate

*"My experience at NISS has been filled with great opportunities for which I am truly grateful."*

Andreea Erciulescu, Former NISS Research Associate

**AFFILIATES!**

**SEND YOUR JOB ANNOUNCEMENTS TO NISS!**

**A link to the Job Announcements page can be found at the bottom of every page of the NISS website! Share your announcement with other organizations associated with NISS or other visitors to our website.**

**<https://www.niss.org/careers>**



**MARCH****7th NOGGINS Workshop**

**Event Date:** March 27, 2020  
**Event Location:** Athens, Georgia

The functional Magnetic Resonance Imaging (fMRI) data analysis group of the University of Georgia Department of Statistics will host the seventh NOGGINS (Network of Greater Georgia Institutions for Neuroimaging and Statistics) workshop on Friday, March 27, 2020. The workshop provides a forum for... ([read more](#))

**Second Government Virtual Career Fair**

**Event Date:** Late March  
**Event Location:** Virtual Meet-up

Representatives from a variety of U.S. Government statistical agencies will talk about opportunities and career paths within their institutions including the FDA, CDC and NCI. More details coming soon!

**NISS's Third p-value Webinar**

**Event Date:** Late March  
**Event Location:** Virtual Meet-up

Individuals from backgrounds where p-value is pretty heavily used, where multiplicity adjustments in the frequentist sense is a core action in their inferential world will speak. More details coming soon!

**APRIL****72nd Clemson University / University of Georgia Joint Statistics Colloquium**

**Event Date:** April 16, 2020

Since 1973, the Department of Mathematical Sciences (now known as the School of Mathematical and Statistical Sciences) at Clemson University and the Department of Statistics at The University of Georgia (UGA) have worked together to organize the UGA/Clemson Joint Seminar Series. The first joint... ([read more](#))

**Virtual Career Fair: Career Opportunities in Academia**

**Event Date:** April 23, 2020  
**Event Location:** Virtual Meet-up

Representatives from a variety of academic institutions will talk about opportunities and career paths within their departments. More details coming soon!

**The 2020 Bradley Lecture**

**Event Date:** Friday, April 24, 2020 - 3:30pm  
**Event Location:** Athens, Georgia

To recognize the professional accomplishments of the late Professor Ralph Bradley, the Department of Statistics at the University of Georgia has been organizing an annual "Bradley Lecture" since 1993. The first Bradley Lecture held in 1993 featured Professors C. R. Rao and Ralph Bradley as speakers... ([read more](#))

**NISS-Merck Virtual Meet-up on Bayesian Statistics in Drug Development**

**Event Date:** April 27, 2020 11-12:30 pm (ET)  
**Event Location:** Virtual Meet-up

Bayesian statistics has been an important topic in the pharma industry for some time. Although the Bayesian perspective has been adopted for a number of important applications, traditional frequentist statistics are still the norm. Nonetheless, there are many proponents who believe that Bayesian... ([read more](#))

**13th Annual Conference on Statistical Issues in Clinical Trials: Cluster Randomized Clinical Trials (CRTs): Challenges and Opportunities**

**Event Date:** April 29, 2020  
**Event Location:** Philadelphia, Pennsylvania

This conference is focused on "Cluster Randomized Clinical Trials (CRTs): Challenges and Opportunities". ([read more](#))

**MAY****The 8th Workshop on Biostatistics and Bioinformatics**

**Event Date:** May 8-10, 2020  
**Event Location:** Atlanta, Georgia

Biostatistics and Bioinformatics have been playing a key and important role in statistics and other scientific research fields in recent years. The goal of this workshop is to stimulate research and to foster the interaction of researchers in Biostatistics & Bioinformatics research areas. The... ([read more](#))

**The Statistical Methods in Imaging Conference 2020**

**Event Date:** May 18-21, 2020  
**Event Location:** Atlanta, Georgia

The Statistical Methods in Imaging (SMI) conference is the annual meeting of the American Statistical Association (ASA) Statistics in Imaging Section. The SMI 2020 conference invites submissions of proposals for invited oral sessions and collaborative case study sessions. Invited Oral Sessions 3... ([read more](#))

**Conference on Statistical Learning and Data Science/ Nonparametric Statistics 2020 (SLDS 2020)**

**Event Date:** May 27-29, 2020  
**Event Location:** Newport Beach, California,

SLDS 202 is a bi-annual gathering of top researchers in Statistical Learning, Data Science, and Nonparametric Statistics, and a forum for presentation and discussion of research. ([read more](#))

Check the [NISS Events webpage](#)  
for up to date event info!

## JUNE

### 2020 Quality and Productivity Research Conference

Event Date: June 8 - June 11, 2020

Event Location: Tallahassee, Florida,

Researchers from academia, industry, and government are invited to participate, exchange ideas, organize sessions, and present their research related to the spirit of Quality and Productivity Research Conference (QPRC). This will be the 37th Annual Quality and Productivity Research Conference.... [\(read more\)](#)

## AUGUST

### 2020 NISS Writing Workshop for Junior Researchers (at JSM)

Event Date: August 2 & 4, 2020

Event Location: Philadelphia, Pennsylvania

Once again this very popular short course will be hosted by NISS. If you are a recent graduate of a doctoral program and want to improve your communication skills - then this event is for you! [\(read more\)](#)

Check the [NISS Events webpage](#) for up to date event info!

## AFFILIATE NEWS OF NOTE!

Phil Kott, long time active NISS affiliate member has just had the book *Better Coverage Intervals for Estimators from a Complex Sample Survey* published through RTI Press.

Congratulations Phil!

This book extends his ideas about coverage (confidence) intervals for estimated proportions based on complex survey data to ratios and regression coefficients.

You can find more information about this title here:

<https://www.rti.org/rti-press-publication/better-coverage-intervals>



# NISS

---

[www.NISS.org](http://www.NISS.org)

For more information about the National Institute of Statistical Sciences,

**CONTACT:**

1750 K STREET NW, SUITE 100, WASHINGTON, DC 20006-2306

PHONE: (202) 800-3880 | EMAIL: [COMMUNICATIONS@NISS.ORG](mailto:COMMUNICATIONS@NISS.ORG)